



 **Star System<sup>®</sup>**  
Distribuzione sistemi di sicurezza

**CATALOGO**

**TELETEK**

**ANTINCENDIO**

---



# TELETEK ELECTRONICS JSC

## 30 YEARS EXCELLENCE

Teletek Electronics JSC is the largest Bulgarian manufacturer of a complete range of alarm and fire alarm systems. The company was founded in 1991 and quickly established itself as a leader in the domestic and international markets.

### What we have achieved for 30 years:

- Continuous innovation – more than 650 own developed products
- More than 190 employees;
- Export in more than 85 countries worldwide;
- More than 30 million manufactured products;
- Almost a million buildings, secured by Teletek Electronics' systems.

### To create a safer world!

We design, create, implement, optimize and maintain technologies that protect people's lives and safety.

We strive to make Teletek Electronics a leading security and fire alarm company in every country in which we operate and achieve sustainable and quality growth with a clear understanding of the responsibilities we carry to our Employees, Customers, Partners and surrounding community.

We protect people through safe, high-tech, innovative life-saving products and security alarm systems.

We are aware of the major global trends and challenges and strive to constantly evolve through increasingly innovative, high-tech and quality products.

### Our Values

- **Quality** - without compromise. In everything - products, services, support, communications. We strive not only to meet the needs of our Customers, but to exceed them.
- **Excellence** - We strive every day to be better than yesterday and achieve new victories, delivering the highest quality and value possible through relevant solutions.
- **Team** - together we can do more! Together we are better! We help, collaborate, support, respect every member of the team regardless of age, gender, position.
- **Innovation** - We strive to understand our Customers' needs and the constant changes in our industry and respond with innovations, improvements and new solutions.
- **Integrity** - noble, honest, open in all our actions and communications to colleagues, Customers and surrounding community
- **Simplicity** - no pretensions and fakes, only true value, both in communications and in the products we develop.
- **Partnership** - we believe that building and maintaining strong relationships is the key to our success. Through collaboration, support and great teamwork, working closely with all our customers, we aim to create and enjoy strong, lasting and long-term partnership.

*We look forward to work, grow, explore and enjoy the next coming years!*



# ADDRESSABLE FIRE ALARM SYSTEMS



# ADDRESSABLE PANELS



**EVPÜ**



	SIMPO	IRIS PRO	iRIS8 S	iRIS8 B
Loops	1 - 2	1-4	1-4	1-8
Devices per Loop	250	250	250	250
Loop Types	Simpo TTE	IRIS TTE/IRIS SS	IRIS TTE	IRIS TTE
Galvanic Separation in Loops	✘	✓	✓	✓
Built-in isolator in Loops	✓	✓	✓	✓
Total number of devices per system	500	1000	1000	2000
Zones	48	96	200	200
Multi language display	✓	✓	✓	✓
Redundant processor	✘	✓	✓	✓
Event Log	10 000	10 000	10 000	10 000
Day/Night Mode	✓	✓	✓	✓
Sounders/Strobes Synchronization	✓	✓	✓	✓
Display	4*40 symbols LCD	320/240 touch screen	800/480 TFT	800/480 TFT
TCP/IP	✘	Yes (built-in)	Yes (built-in)	Yes (built-in)
Redundant network (RS485)	Yes (optional)	Yes (optional)	Yes (optional)	Yes (optional)
Battery	1x12V/18Ah	1x12V/18Ah	2x12V/18Ah	2x12V/18Ah
Monitoring of the internal battery resistance	✓	✓	✓	✓
Box	Metal	Metal	Metal	Metal
Color	Grey	Grey/Red	Grey/Red	Grey/Red
Dimensions	306x412x81mm	430x330x117mm	430x660x120mm	430x660x120mm
Flush mounting	✘	✓	✓	✓
Software Support	ProsTE/Observer	ProsTE/Observer	ProsTE/Observer	ProsTE/Observer
Standard	EN 54-2/4 EN 54-13	EN 54-2/4 EN 54-13	EN 54-2/4 EN 54-13	EN 54-2/4 EN 54-13

# SIMPO

## ADDRESSABLE PANEL

- Up to 2 loops with up to 250 devices per loop
- Entry level solution for smaller addressable installations

SIMPO is the perfect solution for your cost effective installations. It supports operation with up to two loops with coverage of 48 zones. 250 devices with Teletek Electronics protocol (SIMPO TTE Loop) could be connected to each loop. System status is visualized via LCD display and LED indication. Up to 64 panels (IRIS, iRIS8, SIMPO, Repeater) can be connected in RS485 redundant network. The panels support operation with Observer monitoring software. Direct programming with ProsTE software is available. The panel comes in a metal casing with a multilingual LCD display and front foil for easier customizing.

### Functional Features

Loops:	1 to 2 (TTE protocol)
Devices per loop:	250
Zones:	48
Back-up battery:	1, 12V/18Ah
Inputs:	3
Outputs: (monitored, relay type)	2, Sounder, 24V/0.5A 1, Auxiliary, 24V/0.5A 1, Fire Protection, 24/0.3A 1, Fire, 24/0.3A 1, Fault, 24/0.3A
Outputs (non-monitored, programmable, relay type):	4, 15A@24VDC
Memory LOG:	10 000 events
Panels in RS485 redundant network (optional module):	Up to 64
Thermal printer:	Optional
Display:	4*40 symbols LCD
Multi language support of the software:	✓
Programming:	ProsTE software

EN 54-2/4  
EN 54-13



### Technical Specifications

Main Power Supply	90 ÷ 264VAC
Frequency	47 ÷ 440Hz
Electrical output	4.2A
Internal resistance of the battery	<0.3 Ohm
Operating temperature	-5°C to +40°C
Weight (without battery)	4.2kg



#### TTE LAN Communication module

- LAN Communication module
- Serial communication with SIMPO panel and monitoring software Observer via ModBUS protocol
- 6 programmable inputs/outputs, OC type (up to 100mA each)



#### SIMPO TTE Loop

- Loop Expander for 1 loop
- TTE protocol
- Supports SensorIRIS devices
- Max. consumption of the loop devices - 0.5A
- Max. number of devices in the loop - 250

# IRIS PRO

## ADDRESSABLE PANEL

- Up to 4 loops with up to 250 devices per loop
- Works with two types communication protocols

IRIS PRO is addressable fire alarm panel with 1 to 4 loops and maximum coverage of 96 zones. Up to 250 devices can be connected to every system loop. The information for the system status is visualized on sensitive graphic display and LED indication for zones and troubles. With special "2 Steps of alarm level" working algorithm the false alarms are effectively minimized. The panel has a comprehensive day/night mode facility. The panel supports two communication protocols: Teletek Electronics (IRIS TTE loop) and System Sensor (IRIS SS loop) according to the type of the used devices. Up to 64 panels (IRIS, iRIS8, SIMPO, Repeater) can be connected in Ethernet or RS485 redundant network. The panel supports operation with Observer monitoring software. Direct programming with ProsTE software.

### Functional Features

Loops:	1 to 4 (TTE/SS protocol)
Devices per loop:	250 (TTE loop); 198 (SS loop)
Zones:	96
Back-up battery:	1, 12V/18Ah
Outputs (monitored):	1, Sounder, 24V/0.3A 1, Auxiliary, 24V/0.3A 1, Fire Protection, 24/0.3A 1, Fire, 24/0.3A
Outputs (non-monitored, programmable):	4, Relay type, 15A@24VDC 1, Fault, 24/0.3A
Programmable inputs/ outputs:	Up to 250
Memory LOG:	10 000 events
Panels in Ethernet network (built-in TCP/IP):	Up to 64
Panels in RS485 redundant network (optional module):	Up to 64
Thermal printer:	Optional
Display:	320/240 touch screen
Multi language support of the software:	✓
Programming:	ProsTE software

EN 54-2/4  
EN 54-13



- RAL 7011 (grey)
- RAL 3003 (red)

### Technical Specifications

Main Power Supply ..... 230VAC +10%/-15%  
 Frequency ..... 50/60Hz  
 Electrical output ..... 7.0A  
 Internal resistance of the battery .... <0.3 Ohm  
 Operating temperature ..... -5°C to +40°C  
 Weight (without battery) ..... ~6kg



#### IRIS SS Loop

- Loop Expander for 1 loop
- System Sensor protocol
- Supports System Sensor devices
- Max. consumption of the loop devices - 0.5A
- Max. number of devices in the loop - 198 (99 detectors + 99 devices)



#### IRIS TTE Loop

- Loop Expander for 1 loop
- TTE protocol
- Supports SensorIRIS devices
- Max. consumption of the loop devices - 0.5A
- Max. number of devices in the loop - 250

# iRIS8

## ADDRESSABLE PANELS

- Up to 8 loops with up to 250 devices per loop
- Works with Teletek Electronics communication protocol

iRIS8 S is an addressable fire alarm solution supporting 1 to 8 loops and maximum coverage of 200 zones. The full capacity for the system with 8 loops is achieved with connection to an expansion box (iRIS8 Ext) with space for additional 4 loop controllers. The expansion box is equipped with own power supply unit and control PCB with one powerful sounder output. The information for the system status is visualized on TFT graphic display and LED indication for zones and troubles. Up to 64 panels (IRIS, iRIS8, SIMPO, Repeater) can be connected in Ethernet or RS485 redundant network. The panels support operation with Observer monitoring software. Direct programming with ProsTE software. The metal boxes of iRIS8 S and iRIS8 Ext can be easily organized in a modular structure, as all cable connection between them are hidden inside. The metal box of iRIS8 S and iRIS8 Ext are secured with an access key.

### Functional Features (iRIS8 S+iRIS8 Ext configuration)

Loops:	1 to 8 (TTE protocol)
Devices per loop:	250 (TTE loop)
Zones:	200
Back-up battery:	1+1, 12V/18Ah
Inputs (monitored):	3
Outputs (monitored):	<b>iRIS8 S</b> 1, Sounder, 24V/1A 1, Auxiliary, 24V/0.3A 1, Fire Protection, 24V/0.1A 1, Fire, 24V/0.1A 1, Fault, 24V/0.1A <b>iRIS8 Ext</b> 1, Sounder, 24V/1A 1, Auxiliary, 24V/0.5A
Outputs (non-monitored, programmable):	4, Relay type, 10A@24VDC 1, Fire Protection (VdS 2540), 24V/0.1A
RS232/RS485 interface:	Built-in
Programmable inputs/outputs:	Up to 250
Memory LOG:	10 000 events
Panels in Ethernet network (built-in TCP/IP):	Up to 64
Panels in RS485 redundant network (optional module):	Up to 64
Thermal printer:	Optional
Display:	800/480 TFT
Multi language support of the software:	✓
Programming:	ProsTE software

EN 54-2/4  
EN 54-13

### iRIS8 S



### iRIS8 Ext



- RAL 7011 (grey)
- RAL 3003 (red) - optional

### Technical Specifications

Main Power Supply .....	230VAC +10%/-15%
Frequency .....	50/60Hz
Electrical output .....	~30A
Internal resistance of the battery ....	<0.3 Ohm
Operating temperature .....	-5°C to +40°C
Weight (without battery):	
• iRIS8 S .....	~7kg
• iRIS8 Ext .....	~6.2kg



### IRIS TTE Loop

- Loop Expander for 1 loop
- TTE protocol
- Supports SensiIRIS devices
- Max. consumption of the loop devices - 0.5A
- Max. number of devices in the loop - 250



# iRIS8

## ADDRESSABLE PANELS

iRIS8 B is situated in a big metal box and is a solution for application in vast public or office buildings. All loop controllers are situated in a single box secured with two access keys. The information for the system status is visualized on TFT graphic display and LED indication for zones and troubles. Up to 64 panels (IRIS, iRIS8, SIMPO, Repeater) can be connected in Ethernet or RS485 redundant network. The panels support operation with Observer monitoring software. Direct programming with ProsTE software.

### Functional Features

Loops:	1 to 8 (TTEprotocol)
Devices per loop:	250 (TTE loop)
Zones:	200
Back-up battery:	2, 12V/18Ah
Inputs (monitored):	3
Outputs (monitored):	2, Sounder, 24V/1A 1, Auxiliary, 24V/0.3A 1, Auxiliary, 24V/0.5A 1, Fire Protection, 24V/0.1A 1, Fire, 24V/0.1A 1, Fault, 24V/0.1A
Outputs (non-monitored, programmable):	4, Relay type, 10A@24VDC 1, Fire Protection (VdS 2540), 24V/0.1A
RS232/RS485 interface:	Built-in
Programmable inputs/outputs:	Up to 250
Memory LOG:	10 000 events
Panels in Ethernet network (built-in TCP/IP):	Up to 64
Panels in RS485 redundant network (optional module):	Up to 64
Thermal printer:	Optional
Display:	800/480 TFT
Multi language support of the software:	✓
Programming:	ProsTE software

EN 54-2/4  
EN 54-13

### iRIS8 B



- RAL 7011 (grey)
- RAL 3003 (red) - optional

### Technical Specifications

Main Power Supply .....	230VAC +10%/-15%
Frequency .....	50/60Hz
Electrical output .....	~30A
Internal resistance of the battery.....	<0.3 Ohm
Operating temperature.....	-5°C to +40°C
Weight (without battery) .....	~15kg



### IRIS TTE Loop

- Loop Expander for 1 loop
- TTE protocol
- Supports SensiRIS devices
- Max. consumption of the loop devices - 0.5A
- Max. number of devices in the loop - 250

# SIMPO/IRIS

## INTERFACE PANELS AND MODULES

Specially designed boxes for building of modular structures. The boxes are easily mounted to each hiding all power and connection cables inside.



### IRIS Printer

- Thermal printer in a metal box
- Suitable for modular structure
- Power supply 100-240VAC, 1.5A
- Serial interface RS-232C
- Paper width 80mm, valid print width 72mm
- Print speed max. 170mm/sec
- Self test and status indication
- Colour - grey
- Dimensions - 430x330x117mm
- Certified to EN 54-13



### IRIS PS72

- Back-up power supply unit
- Suitable for modular structure
- Power supply 100-240VAC, 1.5A
- Place for 2 accumulator batteries 12V/18Ah
- Colour - grey
- Dimensions - 430x330x117mm
- Certified to EN 54-4, EN 54-13



A range of RS485 interface modules provide additional functionality to any fire alarm system using SIMPO, IRIS PRO or iRIS8 addressable panel. The interface modules are with compact size and are easily mounted to the panels' a configuration - the installation is on slot.



### IRIS/SIMPO Redundant module

- RS485 Network module
- The maximum length between two modules is 1000m



### PASO Interface module

- Evacuation voice interface module
- RS485 communication protocol
- Network connection with up to 5 PASO specialized panels

The following table is a quick guide for the compatibility between the Teletek Electronics JSC fire alarm panels and the presented interface panels and modules.

Compatibility	SIMPO	IRIS PRO	iRIS8 B	iRIS8 S	iRIS8 Ext
IRIS Printer	✓	✓	✓	✓	✗
IRIS PS72	✓	✓	✓	✓	✓
IRIS/SIMPO Redundant module	✓	✓	✓	✓	✗
PASO Interface module	✓	✓	✗	✗	✗
Modular structure	✗	✓	✓	✓	✓

# REPEATER

## IRIS/SIMPO REPEATER PANELS

The Repeater panel is designed to display the events of the connected in redundant network IRIS and SIMPO addressable fire panels.

The Repeater panel is designed to work with Teletek Electronics' addressable fire alarm panels IRIS and SIMPO. It is used to display the events of the connected to the network addressable panels. The connection between the Repeater panel and addressable panels IRIS and/or SIMPO is via redundant network module. The maximum number of fire alarm panels in a network is 64. The maximum distance between two panels is up to 1000m. The Repeater panel has a built-in real time clock. Available micro USB for latest software and firmware updates.

The Repeater panel is available in two model versions according the way for visualization of the alarm events and system status:

- Repeater TFT (LCD touch screen display)
- Repeater (LCD display and LED indication for system status)

EN 54-2/4  
EN 54-13

### Repeater TFT



### Repeater



- RAL 9002 (off-white)
- RAL 7011 (grey)

Functional Features	Repeater TFT
Protocol type:	TTE
Panels in redundant network:	up to 64
Network type topology:	Ring or line
RS485 interface:	✓
LAN interface:	✓
USB interface for software update:	✓
Connection wires:	0.5-2.5mm <sup>2</sup>
Max. length between two panels:	1000m
Memory LOG:	10 000 events
Display:	800/480 TFT
Multi language support of the software:	✓
Color:	Grey

Functional Features	Repeater
Protocol type:	TTE
Panels in redundant network:	up to 64
Network type topology:	Ring or line
RS485 interface:	✓
LAN interface:	✗
USB interface for software update:	✓
Connection wires:	0.5-2.5mm <sup>2</sup>
Max. length between two panels:	1000m
Memory LOG:	10 000 events
Display:	4*40 symbols LCD
Multi language support of the software:	✓
Color:	White/Grey

### Technical Specifications

Main power supply	24±4VDC
Frequency	50/60Hz
Max. consumption:	0.4A
Operating temperature	-5°C to +50°C
Dimensions	200x330x48mm
Weight:	0.90kg

### Technical Specifications

Main power supply	24±4VDC
Frequency	50/60Hz
Max. consumption:	0.11A
Operating temperature	-5°C to +50°C
Dimensions	200x330x48mm
Weight:	0.77kg

# SensolRIS

## ADDRESSABLE DETECTORS



### SensolRIS T110/T110 IS

EN 54-5; EN 54-17  
EN 54-13

- Fixed Temperature and Rate of Rise detector
- Supports Teletek Electronics protocol
- Class, selectable from the control panel - A1/R, A2/S, B/S
- Day/Night mode (programmable from the panel)
- Low profile design
- LED indication with 360° visibility
- Available with built-in isolator - SensolRIS T110 IS (white/black)
- Compatible with standard bases B124 and B124-HP
- Compatible with deep base accessory DeepBase W
- IP30

Color models	T110	T110 IS
○ RAL9016 (White)	✓	✓
● RAL9005 (Black)	✗	✓



### SensolRIS S130/S130 IS

EN 54-5; EN 54-17  
EN 54-13

- Optical smoke detector
- Supports Teletek Electronics protocol
- Sensitivity, selectable from the control panel - High/Normal/Middle/Low
- Day/Night mode (programmable from the panel)
- Low profile design
- LED indication with 360° visibility
- Available with built-in isolator - SensolRIS S130 IS (white/black)
- Compatible with standard bases B124 and B124-HP
- Compatible with deep base accessory DeepBase W
- IP30

Color models	S130	S130 IS
○ RAL9016 (White)	✓	✓
● RAL9005 (Black)	✗	✓



### SensolRIS M140/M140 IS

EN 54-5; EN 54-17  
EN 54-13

- Combined detector
- Supports Teletek Electronics protocol
- Class (in accordance with EN54-5) - A1/R
- Sensitivity (in accordance with EN54-7) - High/Normal/Middle/Low
- Day/Night mode (programmable from the panel)
- Low profile design
- LED indication with 360° visibility
- Available with built-in isolator - SensolRIS M140 IS (white/black)
- Compatible with standard bases B124 and B124-HP
- Compatible with deep base accessory DeepBase W
- IP30

Color models	M140	M140 IS
○ RAL9016 (White)	✓	✓
● RAL9005 (Black)	✗	✓

# SensolRIS

## BASES



### SensolRIS B124

EN 54-13

- Compatible with SensolRIS detectors and SensolRIS WSxx sounders
- Compatible with deep base accessory DeepBase W/R
- Low Profile design
- Wire gauge for terminals - 0.4 - 2.0mm<sup>2</sup>
- Material (plastic) - ABS
- Dimensions 103x11mm

Color models	B124
○ RAL9016 (White)	✓
● RAL9005 (Black)	✓



### SensolRIS B124-HP

- Compatible with SensolRIS detectors and SensolRIS WSxx sounders
- High Profile design
- Special info plate for labeling the device address and name
- Wire gauge for terminals - 0.4 - 2.0mm<sup>2</sup>
- Engraved signs for the terminals
- Material (plastic) - ABS
- Dimensions 104x17.5mm



### DeepBase W

- Deep base accessory
- Color - white (RAL 9016)
- Application for mounting on rough surfaces, pipelines, floating ceilings, etc
- Compatible with SensolMAG and SensolRIS detectors; SensolRIS WSXX/BSXX sounders; Belinda WSxx sounders; SF100 WSST/ WSND sounders; Hera WSST/WSND sounders

# SensolRIS

## ADDRESSABLE CALL POINTS



### SensolRIS MCP150

- Manual call point
- Supports Teletek Electronics protocol
- Type of the working element - resettable (flexible)
- Type (according to EN54-11) - A
- Built-in isolator
- Material (plastic), color - ABS, red
- Optional protective plastic cover
- IP40

EN 54-5; EN 54-17  
EN 54-13



### SensolRIS MCP150 IP67

- Waterproof protected manual call point
- Supports Teletek Electronics protocol
- Built-in isolator module
- Surface mounting
- Resettable flexible element
- Type (according to EN54-11) - A
- LED indication
- Special test tool for resetting after alarm event
- Protective plastic cover
- Cable glands and o-ring protected sealant
- IP67 according EN 60529

EN 54-5; EN 54-17  
EN 54-13  
EN 60529



### Call Point Plastic Cover Set

- Set of 5 pcs. protective plastic cover for manual call-points
- Compatible with SensolRIS MCP150 and SensolRIS MCP150 IP67



SensolRIS MCP150MR - Metal, powder-coated/Red

SensolRIS MCP150PR - Plastic, ABS/Red

SensolRIS MCP150PB - Plastic, ABS/Blue

- Manual call points
- Supports Teletek Electronics protocol
- Working element (2 elements): frangible (a break glass) and operating (a button)
- Type (according to EN54-11) - B
- Built-in isolator
- Special key for opening
- Auto-reset at door closing

EN 54-5; EN 54-17  
EN 54-13

# SensolRIS

## ADDRESSABLE MODULES



### SensolRIS MIOxx

- Input/output modules:
  - MIO22 (2 inputs, 2 outputs)
  - MIO04 (4 outputs)
  - MIO40 (4 inputs)
- Placed in plastic box with transparent cover for easy inspection
- Built-in isolator
- Loop powered
- IP21

EN 54-18/17  
EN 54-13



### SensolRIS MIO22M

- Module with 2 inputs and 2 monitored outputs
- Supports Teletek Electronics protocol
- Two operation modes for the outputs: monitored and non-monitored
- Placed in plastic box with transparent cover for easy inspection
- Built-in isolator
- Loop powered
- IP21

EN 54-18/17  
EN 54-13



### SensolRIS MC-Z

- Conventional zone module
- Supports Teletek Electronics protocol
- Interface between a zone of conventional detectors and loop expander
- Placed in plastic box with transparent cover for easy inspection
- Built-in isolator
- Loop powered
- IP21

EN 54-18/17  
EN 54-13



### SensolRIS MOUT

- Potential output for conventional sounders
- Supports Teletek Electronics protocol
- Interface between a zone of conventional sounders and loop expander
- Placed in plastic box with transparent cover for easy inspection
- Built-in isolator
- IP21

EN 54-18/17  
EN 54-13



### SensolRIS MOUT - 240

- Electrical mains switching output
- Supports Teletek Electronics protocol
- Suitable for control of 240VAC voltage circuits
- Placed in plastic box with transparent cover for easy inspection
- Built-in isolator
- Loop powered
- IP21

EN 54-18/17  
EN 54-13

# SensolRIS

## ADDRESSABLE MODULES



### SensolRIS MIOxx IP55

- Input/output modules:
  - MIO22 IP55 (2 inputs, 2 outputs)
  - MIO04 IP55 (4 outputs)
  - MIO40 IP55 (4 inputs)
- Placed in big plastic box suitable for wall mounting
- Built-in isolator
- Loop powered
- IP55

EN 54-18/17  
EN 54-13



### SensolRIS MIO22M IP55

- Module with 2 inputs and 2 monitored outputs
- Supports Teletek Electronics protocol
- Two operation modes for the outputs: monitored and non-monitored
- Placed in big plastic box suitable for wall mounting
- Built-in isolator
- Loop powered
- IP55

EN 54-18/17  
EN 54-13



### SensolRIS MC-Z IP55

- Conventional zone module
- Supports Teletek Electronics protocol
- Interface between a zone of conventional detectors and loop expander
- Placed in big plastic box suitable for wall mounting
- Built-in isolator
- Loop powered
- IP55

EN 54-18/17  
EN 54-13



### SensolRIS MOUT IP55

- Potential output for conventional sounders
- Supports Teletek Electronics protocol
- Interface between a zone of conventional sounders and loop expander
- Placed in big plastic box suitable for wall mounting
- Built-in isolator
- Loop powered
- IP55

EN 54-18/17  
EN 54-13



### SensolRIS MOUT-240 IP55

- Electrical mains switching output
- Supports Teletek Electronics protocol
- Suitable for control of 240VAC voltage circuits
- Placed in big plastic box suitable for wall mounting
- Built-in isolator
- Loop powered
- IP55

EN 54-18/17  
EN 54-13



# SensolRIS

## ADDRESSABLE MODULES



### SensolRIS MIMIC

- 32 Outputs for LED control
- Two operation modes for LED outputs control: common-anode or common-cathode, programmable via jumper on the PCB
- Built-in compensating resistors
- Built-in isolator module
- Easy for operation pluggable connectors for quick wire installation on the site
- Special inputs for LED operation Test, Silence alarm and Reset of the Fire panel, Silence of the module's buzzer
- Special LED Outputs for repeating the FIRE, Fault and Disablement indication of the fire panel
- Separate LED Output for indication of the power supply status of the connected Mimic panel
- Enclosure box for wall mounting, IP43

EN 54-18/17  
EN 54-13



### SensolRIS MINP M

- Mini module with one monitored input
- Used for connection of external control devices, gas detection, panic switches, etc
- Compact size for built-in mounting
- Supports Teletek Electronics protocol

EN 54-18  
EN 54-13



### SensolRIS MISO

- Isolator module
- Placed in plastic box with cable running holes for easy installation
- Supports Teletek Electronics protocol
- IP40

EN 54-17  
EN 54-13

## HANDHELD SERVICE TOOLS



### SensolRIS Programmer

- Programming tool
- Compatible with SensolRIS detectors, sounders and modules
- Supports Teletek Electronics protocol
- Mobility in operation
- Multi language support
- Optional battery power supply 4x1.5V (not included)
- The kit includes: cables for programming SensolRIS modules; AC-DC adapter



### Loop Tester

- Loop and line diagnostic tool
- Cable test
- Easy location of short and break faults
- Auto-addressing support
- Compatible with SensolRIS detectors, sounders and modules
- Supports Teletek Electronics protocol
- Mobility in operation
- Multi language support
- Easy for operation 2-cage clamp connectors for quick wire connection
- The kit includes: 4 pcs 2-cage terminals; 4 pcs wires (2 red and 2 black); AC-DC adapter

# ADDRESSABLE

## SOUNDERS/STROBES



### Belinda WSOU/WSOU IS

- Wall mount sounder
- Two sound levels - LOW: 82-92dB; HIGH: 100-103dB
- 32 tone types selectable from the panel
- Supports Teletex Electronics protocol
- Loop synchronization for better alarm signal
- Loop powered
- Color - white (RAL 9016)
- Compatible with standard bases B124 and B124-HP
- Compatible with deep base accessory DeepBase W
- Available in version with built-in isolator (Belinda WSOU IS)
- IP21C, type A

EN 54-3  
EN 54-17  
EN 54-13



### Belinda WSST/WSST IS EN54-23

- Wall mount sounder and strobe - Visual Alarm Device (VAD)
- Two sound levels - LOW: 80-88dB; HIGH: 92-98dB
- 32 tone types selectable from the panel
- Supports Teletex Electronics protocol
- Loop synchronization for better alarm signal
- Loop powered
- Color - white cap (RAL 9016), white transparent body
- Available in version with built-in isolator (Belinda WSST IS EN54-23)
- Compatible with standard bases B124 and B124-HP
- Compatible with deep base accessory DeepBase W
- IP21C, type A
- Coverage volume: Open class

EN 54-3  
EN 54-17  
EN 54-13



### SensolRIS WSOU/WSOU IS

- Wall mount sounder
- Two sound levels - LOW: 82-92dB; HIGH: 100-103dB
- 32 tone types selectable from the panel
- Supports Teletex Electronics protocol
- Loop synchronization for better alarm signal
- Loop powered
- Color - red (RAL 3020)
- Compatible with standard bases B124 and B124-HP
- Compatible with deep base accessory DeepBase R
- Available in version with built-in isolator (SensolRIS WSOU IS)
- IP21C, type A

EN 54-3  
EN 54-17  
EN 54-13



### SensolRIS WSST/WSST IS EN54-23

- Wall mount sounder and strobe - Visual Alarm Device (VAD)
- Two sound levels - LOW: 80-88dB; HIGH: 92-98dB
- 32 tone types selectable from the panel
- Supports Teletex Electronics protocol
- Loop synchronization for better alarm signal
- Loop powered
- Color - red cap (RAL 3020), white transparent body
- Available in version with built-in isolator (SensolRIS WSST IS EN54-23)
- Compatible with standard bases B124 and B124-HP
- Compatible with deep base accessory DeepBase W
- IP21C, type A
- Coverage volume: Open class

EN 54-3/23  
EN 54-17  
EN 54-13



### SensolRIS WS/WS IS

- Wall mount sounder and strobe
- Two sound levels - LOW: 80-88dB; HIGH: 92-98dB
- 32 tone types selectable from the panel
- Supports Teletex Electronics protocol
- Loop synchronization for better alarm signal
- Loop powered
- Color - red, transparent
- Available in version with built-in isolator (SensolRIS WS IS)
- Compatible with standard bases B124 and B124-HP
- Compatible with deep base accessory DeepBase R
- IP43C, type B

EN 54-3  
EN 54-13

# ADDRESSABLE

## SOUNDERS/STROBES



### SensolRIS BSOU/BSOU IS

- Base with built-in sounder, compatible with SensolRIS detector series
- Suitable for wall or ceiling mounting
- Two sound levels - LOW: 82-92dB; HIGH: 100-103dB
- 32 tone types selectable from the panel
- Supports Teletek Electronics protocol
- Loop synchronization for better alarm signal
- Loop powered
- Available in version with built-in isolator (SensolRIS BSOU IS)
- Compatible with deep base accessory DeepBase W
- IP21C, type A
- Optional cover when the base is used only as a sounder

EN 54-3  
EN 54-17  
EN 54-13

Color models	BSOU	BSOU IS
○ RAL9016 (White)	✓	✓
● RAL9005 (Black)	✗	✓



### SensolRIS BSST/BSST IS

- Base with built-in sounder and strobe, compatible with SensolRIS detector series
- Two sound levels - LOW: 82-92dB; HIGH: 100-103dB
- 32 tone types selectable from the panel
- Supports Teletek Electronics protocol
- Loop synchronization for better alarm signal
- Loop powered
- Color - white, transparent
- Available in version with built-in isolator (SensolRIS BSST IS)
- Compatible with deep base accessory DeepBase W
- IP21C, type A
- Optional cover when the base is used only as a sounder

EN 54-3  
EN 54-17  
EN 54-13



### Sounder Plastic Cover Set

- Protective plastic cover
- For application with bases SensolRIS BSxx when the device is used only as a sounder
- Set of 5 pcs. protective plastic cover for sounders



### SensolRIS WSB IP65

- Waterproof protected deep base
- Wall mounting
- SensolRIS B124 standard base factory mounted
- Installation wires - 3mm<sup>2</sup>
- Cable glands and o-ring protected sealant
- IP65 according EN 60529
- Compatible with Belinda WSxx wall sounders
- Compatible with SensolRIS WSxx wall sounders

EN 54-13



### DeepBase W

- Deep base accessory
- Color - white (RAL 9016)
- Application for mounting on rough surfaces, pipelines, floating ceilings
- Compatible with SensoMAG and SensolRIS detectors; SensolRIS WSXX/BSXX sounders; Belinda WSxx sounders; SF100 WSST/WSND sounders; Hera WSST/WSND sounders



### DeepBase R

- Deep base accessory
- Color - red (RAL 3020)
- Application for mounting on rough surfaces, pipelines, floating ceilings
- Compatible with SensolRIS WSxx sounders, SF100 RSST/RSND and Hera RSST/RSND sounders

# CONVENTIONAL FIRE ALARM SYSTEMS



# MAG SERIES

## CONVENTIONAL PANELS

EVPÜ



MAG2

MAG4

MAG8

MAG8Plus

	MAG2	MAG4	MAG8	MAG8Plus
Zones	2	4	8	8-16
Devices	32 per zone*	32 per zone*	32 per zone*	32 per zone*
Double knock	✗	✗	✓	✓
Sounder output	2 (0.3A)	2 (0.3A)	2 (0.5A)	4 (0.3A)
Fire relay	✓	✓	✓	✓
Fault relay	✓	✓	✓	✓
AUX output	Yes (0.3A)	Yes (0.3A)	Yes (0.3A)	Yes (0.3A)
Sounder delays	✗	✗	✓	✓
Instant zone	✗	✗	✓	✓
Indication	LED	LED	LED	LED
Access protection	Key	Key	Key	Key
Plastic box/Metal box	✓/✓	✓/✓	✓/✗	Cover: plastic, Bottom: metal
Zone expander	✗	✗	✗	✓
Sounder expander	✗	✗	✗	✓
LOG module	✗	✗	✓	✓
Relay expander	✗	✗	✓	✓
Battery	1x12V/7Ah	1x12V/7Ah	1x12V/7Ah	1x12V/18Ah
Standard	EN 54-2/4	EN 54-2/4	EN 54-2/4	EN 54-2/4

\* with SensoMAG detectors

# MAG2/4

## CONVENTIONAL PANELS



MAG2 and MAG4 are conventional fire detection and indication panels certificated by EN 54-2/4. MAG2 maintains 2 fixed zones with fire detectors and call points; MAG4 maintains 4 fixed zones. The MAG2 and MAG4 panels have small size, handy cabinet, internal self-testing for technical faults. Easy for installation and maintenance, user-friendly and simple operation - that makes the MAG fire panels suitable for home, small and middle office applications.

### Functional Features

Zones:	2 fixed zones
Devices per zone:	32
Back-up battery:	1, 12V/7Ah
Active EOL for continuous monitoring of inputs:	✓
Sounder outputs:	2, monitored, 0.3A each
AUX output:	24VDC/0.3A fuse
Multi language support:	✓
Enclosure box:	
• MAG2P	Plastic
• MAG2	Metal
Secure access:	Key

### MAG2

EN 54-2/4



### Technical Specifications

Main Power Supply	230VAC ± 10%
Current consumption (mains failure)	50mA
Internal resistance of the battery	<1.6 Ohm
Operating temperature	-5°C to +40°C
Weight (without battery)	2.7kg (m); 2.1kg (p)
Dimensions of the metal box	200x290x80mm
Dimensions of the plastic box	340x290x100mm

### Functional Features

Zones:	4 fixed zones
Devices per zone:	32
Back-up battery:	1, 12V/7Ah
Active EOL for continuous monitoring of inputs:	✓
Sounder outputs:	2, monitored, 0.3A each
AUX output:	24VDC/0.3A fuse
Multi language support:	✓
Enclosure box:	
• MAG4P	Plastic
• MAG4	Metal
Secure access:	Key

### MAG4

EN 54-2/4



### Technical Specifications

Main Power Supply	230VAC ± 10%
Current consumption (mains failure)	50mA
Internal resistance of the battery	<1.6 Ohm
Operating temperature	-5°C to +40°C
Weight (without battery)	3.5kg (m); 2.1kg (p)
Dimensions of the metal box	320x220x80mm
Dimensions of the plastic box	340x290x100mm

# MAG8

## CONVENTIONAL PANEL

EN 54-2/4

MAG8 is a conventional fire detection and indication panel certificated by EN 54-2/4. MAG8 maintains 8 fixed zones with fire detectors and call points.

MAG8 panel has small size, handy cabinet, internal self-testing for technical faults. The programming is simple by means of jumpers. Easy for installation and maintenance, user-friendly and simple operation - that makes the MAG fire panels suitable for home, small and middle office applications.

### Functional Features

Zones:	8 fixed zones
Devices per zone:	32
Back-up battery:	1, 12V/7Ah
Active EOL for continuous monitoring of inputs:	✓
Sounder outputs:	2, monitored, 0.5A each
AUX output:	24VDC/0.3A fuse
Multi language support:	✓
Enclosure box:	Plastic
Double knock mode:	✓
Sounders delay:	1-10 min, Programmable
Secure access:	Key

### MAG8

EN 54-2/4



### Technical Specifications

Main Power Supply	230VAC ± 10%
Current consumption (mains failure)	125mA
Auxiliary output	24VDC/0.3A fuse
Internal resistance of the battery	<0.45 Ohm
Operating temperature	-5°C to +40°C
Weight (without battery)	2.4kg
Dimensions of the plastic box	340x290x100mm



### ML LOG Module

- Recording and viewing of events
- Compatible with MAG8\*
- Memory for 8190 events
- Operation keypad with 4 buttons
- LCD display with backlight
- Multi language menus



### MR 8

- 8 relay expander module
- Compatible with MAG8
- 1A/12V or 0.5A/24V

\* For installation with MAG8 fire alarm panel, the module is mounted into compact small plastic box SB-U with transparent cover. The SB-U box is sold separate.

# MAG8PLUS

## CONVENTIONAL PANEL

- Expandable 8 to 16 zones
- Supports up to 32 detectors and call points per zone

MAG8Plus is a conventional fire detection and indication panel certificated by EN 54-2/4. The panel maintains from 8 to 16 zones with fire detectors and call points. MAG8Plus is based on a modular principle - a power unit, a control panel, zone/sounder expanders, an indication module and battery space.

A detailed LED indication shows the status of the system, divided into two groups - for technician level and for monitor and observer level. The programming is simple by means of jumpers.

The MAG8Plus is suitable for vast range of applications - big office buildings, schools, supermarkets, etc.

### Functional Features

Zones:	8, expandable to 16
Devices per zone:	32
Back-up battery:	1, 12V/18Ah
Active EOL for continuous monitoring of inputs:	✓
Sounder outputs:	4, monitored, 0.3A each
AUX output:	24VDC/0.3A fuse
Multi language support:	✓
Enclosure box:	Plastic
Double knock mode:	✓
Sounders delay:	1-10 min, Programmable
Secure access:	Key

EN 54-2/4



### Technical Specifications

Main Power Supply	.....230VAC ±10%
Current consumption (mains failure)	....260mA*
Auxiliary output	.....24VDC/0.3A fuse
Operating temperature	.....-5°C to +40°C
Weight (without battery)	.....4kg
Dimensions of metal bottom	.....441x331x80mm
Dimensions of plastic cover	.....461x344x45mm

\* with connected 4 zone expander modules



#### ML LOG Module

- Recording and viewing of events
- Built-in mounting in MAG8Plus
- Memory for 8190 events
- Operation keypad with 4 buttons
- LCD display with backlight
- Multi language menus



#### MS 4

- 4 sounder outputs expander module



#### MR 8

- 8 relay expander module
- Compatible with MAG8Plus
- 1A/12V or 0.5A/24V



#### ME 4

- 4 zone expander module





# EXTINGUISHING PANEL

- Conventional Fire Extinguishing Panel
- 2 zones for extinguishing and 1 conventional fire alarm zone

IVY is a conventional fire extinguishing control panel certificated by EN 54-2/4 and EN 12094-1 standards. The panel is designed for using together with systems for gas, powder, aerosol, water and other types of active extinguishing.

IVY has 3 hard wired zones - 2 for activation of automatic fire detectors and 1 conventional fire zone. Automatic and manual operation modes (selectable via 3 positional key lock) allow the operators to choose the extinguishing process control. The extinguishing process can be activated also manually with a special button on the front panel.

The IVY conventional panel is designed for extinguishing in one zone and can operate with solenoids, pressostats and other kind of actuators. Optional LOG module for reviewing of recorded memory events (up to 1000 events) can be included in the system configuration.

## Functional Features

Zones:	3 (2 for extinguishing + 1 conventional fire alarm)
Devices per zone:	32
Back-up battery:	2, 12V/7Ah (serial connection)
Sounder outputs: (monitored, potential)	2, 0.3A each
Extinguishing output: (monitored, potential)	1A@5min/3A@20ms
Inputs: (monitored)	6
Inputs: (non-monitored, relay)	3
Inputs, OC type: (non-monitored)	4
Display:	2-digit, 7-segment, LED
Multi language support:	✓
Enclosure box:	Metal

EN 12094-1, EN 54-2/4



## Technical Specifications

Main Power Supply	110-230VAC ±10%
Frequency	47-60Hz
Electrical output	26VDC; 1.5A
Consumption	0.3A@230VAC; 0.7A@110VAC
Internal resistance of the battery	<0.3 Ohm
Operating temperature	-5°C to +40°C
Weight (without batteries)	~3.2kg
Dimensions	324x314x82mm



### SensoMAG MRB50

- Manual Release Button
- For activation of the extinguishing
- Protective transparent cover
- Resettable flexible element
- Color - yellow



### SensoMAG MHB50

- Emergency Stop Button
- For emergency stop of the gas extinguishing system
- Protective transparent cover
- Color - blue

### IVY ML



- Optional LOG memory module for IVY panel
- Built-in mounting into the panel's box
- Memory for 1000 events
- Operation keypad with 4 buttons
- LCD display with backlight
- Multi language menus

# SENSOMAG

## CONVENTIONAL DETECTORS



### SensoMAG F10

EN 54-5

- Fixed heat detector
- Detects temperatures over 60°C, class A2/S (SensoMAG F10A)
- Detects temperatures over 75°C, class B/S (SensoMAG F10B)
- Digital processing algorithm
- Low profile design
- LED indication with 360° visibility
- Sensor status indication on every 8 seconds
- Compatible with standard bases B24, B24-HP, B24D, B24RD, B12L/U
- Compatible with deep base accessory DeepBase W



### SensoMAG R20

EN 54-5

- Rate-of-rise heat detector
- Detects temperatures above 58°C or rapid change in temperature for a period of time, class A1/R
- Digital processing algorithm
- Low profile design
- LED indication with 360° visibility
- Sensor status indication on every 8 seconds
- Compatible with standard bases B24, B24-HP, B24D, B24RD, B12L/U
- Compatible with deep base accessory DeepBase W



### SensoMAG S30

EN 54-7

- Optical-smoke detector
- Auto compensation
- Digital processing algorithm
- Low profile design
- LED indication with 360° visibility
- Sensor status indication on every 8 seconds
- Rubber gasket ring for increased protection of the smoke chamber
- Compatible with standard bases B24, B24-HP, B24D, B24RD, B12L/U
- Compatible with deep base accessory DeepBase W



### SensoMAG M40

EN 54-5/7

- Combined detector (Optical-smoke and Rate-of-rise), class A1/R
- Auto compensation
- Digital processing algorithm
- LED indication with 360° visibility
- Sensor status indication on every 8 seconds
- Rubber gasket ring for increased protection of the smoke chamber
- Compatible with standard bases B24, B24-HP, B24D, B24RD, B12L/U
- Compatible with deep base accessory DeepBase W

# SENSOMAG

## CONVENTIONAL DETECTORS



### Sensomag F10 RL

EN 54-5

- Fixed heat detector
- Built-in relay 80mA
- Detects temperatures over 60°C, class A2/S
- Digital processing algorithm
- Low profile design
- LED indication with 360° visibility
- Sensor status indication on every 8 seconds
- Compatible with standard bases B24 and B24-HP
- Compatible with deep base accessory DeepBase W



### Sensomag R20 RL

EN 54-5

- Rate-of-rise heat detector
- Built-in relay 80mA
- Detects temperatures above 58°C or rapid change in temperature for a period of time, class A1/R
- Digital processing algorithm
- Low profile design
- LED indication with 360° visibility
- Sensor status indication on every 8 seconds
- Compatible with standard bases B24 and B24-HP
- Compatible with deep base accessory DeepBase W



### Sensomag S30 RL

EN 54-7

- Optical-smoke detector
- Built-in relay 80mA
- Auto compensation
- Digital processing algorithm
- Low profile design
- LED indication with 360° visibility
- Sensor status indication on every 8 seconds
- Rubber gasket ring for increased protection of the smoke chamber
- Compatible with standard bases B24 and B24-HP
- Compatible with deep base accessory DeepBase W



### Sensomag M40 RL

EN 54-5/7

- Combined detector (Optical-smoke and Rate-of-rise)
- Built-in relay 80mA
- Class A1/R
- Auto compensation
- Digital processing algorithm
- LED indication with 360° visibility
- Sensor status indication on every 8 seconds
- Rubber gasket ring for increased protection of the smoke chamber
- Compatible with standard bases B24 and B24-HP
- Compatible with deep base accessory DeepBase W

# SENSOMAG

## CONVENTIONAL FIRE BASES



### SensoMAG B24

- Standard 24V base for SensoMAG detectors
- Low profile design
- Compatible with fire panels with alarm state current up to 15mA
- Dimensions 102x18mm



### SensoMAG B24-HP

- Standard 24V base for SensoMAG detectors
- High profile design
- Suitable for mounting on rough surfaces
- Compatible with fire panels with alarm state current up to 15mA
- Dimensions 103x25mm



### SensoMAG B24D

- Standard 24V base with Schottky diode for SensoMAG detectors
- Low profile design
- Detects removal of detector from base
- Compatible with fire panels with alarm state current up to 15mA
- Dimensions 102x18mm



### SensoMAG B24RD

- Standard 24V base with Schottky diode and increased alarm state current for SensoMAG detectors
- Low profile design
- Detects removal of detector from base
- Compatible with fire panels with alarm state current from 45mA and higher
- Dimensions 102x18mm



### SensoMAG B12L/U

- Relay 12V base
- Low profile design
- For application in intruder alarm system
- Latched/Unlatched mode
- Dimensions 102x18mm

# SENSOMAG

## CONVENTIONAL CALL POINTS



### SensoMAG MCP50

EN 54-11

- Manual call point
- Surface mounting
- Resettable flexible element
- LED indication
- Special test tool for resetting after alarm event
- Optional protective plastic cover
- IP40



### SensoMAG MCP50 IP67

EN 54-11  
EN 60529

- Waterproof protected manual call point
- Surface mounting
- Resettable flexible element
- Type (according to EN 54-11) - A
- LED indication
- Special test tool for resetting after alarm event
- Protective plastic cover
- Cable glands and o-ring protected sealant
- IP67 according EN 60529



### Call Point Plastic Cover Set

- Set of 5 pcs. protective plastic cover for manual call-points
- Compatible with SensoMAG MCP50 and SensoMAG MCP50 IP67

# SOUNDERS

## CONVENTIONAL



### SF 50

- Indoor fire alarm sander
- Piezo sander
- Sound output - 102dB
- LED strobe
- Plastic case
- Power supply - 24V
- Two-wire connection
- Current - 75mA
- Color - red

EN 54-3



### SF 100 WSST

- Indoor fire alarm wall sander and strobe
- Piezo sander
- LED strobe
- Two sound levels: High- 100dB; Low - 92dB
- Low profile design
- Max. consumption 25mA@24VDC
- 32 Sound types
- 2 Outputs for evacuation and fire alarm
- Two-wire connection
- Color - white, transparent
- Compatible with deep base accessory DeepBase W

EN 54-3/23



### SF 100 RSST

- Indoor fire alarm wall sander and strobe
- Piezo sander
- LED strobe
- Two sound levels: High- 100dB; Low - 92dB
- Low profile design
- Max. consumption 25mA@24VDC
- 32 Sound types
- 2 Outputs for evacuation and fire alarm
- Two-wire connection
- Color - red, transparent
- Compatible with deep base accessory DeepBase R

EN 54-3



### SF 100 RSND

- Indoor fire alarm sander
- Piezo sander
- Two sound levels: High- 100dB; Low - 92dB
- Low profile design
- Max. consumption 22mA@24VDC
- 32 Sound types
- 2 Outputs for evacuation and fire alarm
- Two-wire connection
- Color - red
- Compatible with deep base accessory DeepBase R

EN 54-3



### SF 100 WSND

- Indoor fire alarm sander
- Piezo sander
- Two sound levels: High- 100dB; Low - 92dB
- Low profile design
- Max. consumption 22mA@24VDC
- 32 Sound types
- 2 Outputs for evacuation and fire alarm
- Two-wire connection
- Color - white
- Compatible with deep base accessory DeepBase W

EN 54-3

# SOUNDERS

## CONVENTIONAL



### Hera 100 WSST

EN 54-3/23

- Indoor fire alarm wall sounder and strobe
- Piezo sounder, LED strobe
- Sound level: 95-104dB
- Low profile design
- Max. consumption 85mA@24VDC
- Two-wire connection
- Color - white, transparent
- Compatible with deep base accessory DeepBase W



### Hera 100 RSST

EN 54-3

- Indoor fire alarm wall sounder and strobe
- Piezo sounder, LED strobe
- Sound level: 95-101dB
- Low profile design
- Max. consumption 85mA@24VDC
- Two-wire connection
- Color - red, transparent
- Compatible with deep base accessory DeepBase R



### Hera 100 RSND

EN 54-3

- Indoor fire alarm sounder
- Piezo sounder
- Sound level: 102dB
- Low profile design
- Max. consumption 55mA@24VDC
- Two-wire connection
- Color - red
- Compatible with deep base accessory DeepBase R



### Hera 100 WSND

EN 54-3

- Indoor fire alarm sounder
- Piezo sounder
- Sound level: 102dB
- Low profile design
- Max. consumption 55mA@24VDC
- Two-wire connection
- Color - white
- Compatible with deep base accessory DeepBase W



### SF 200

EN 54-3

- Outdoor fire alarm sounder
- LED strobe
- 1 status indicator
- Sound output - 96dB
- Power supply - 20-30VDC
- Plastic case
- IP54 protection for the electronic part
- Current consumption - <17mA@24V
- Color - red



### SF 300

EN 54-3

- Outdoor fire alarm sounder
- IP44 protection for the electronic part
- Type B
- LED strobe
- Two piezo sounders
- Sound output - 95dB@1m
- Power supply - 20-30VDC
- Plastic case
- Current consumption - <28mA@24VDC
- Color - red

# ACCESSORIES

## FIRE ALARM SYSTEMS



### FRL - 1

- Remote 24V fire indicator
- Repeats the status of 1 or several fire detectors (up to 3 SensoMAG or SensoIRIS detectors)
- 1 input
- Complies with EN 54-23



### DeepBase W

- Deep base accessory
- Color - white (RAL 9016)
- Application for mounting on rough surfaces, pipelines, floating ceilings, etc
- Compatible with SensoMAG detectors, SensoIRIS detectors, SensoIRIS WSxx and BSxx sounders, Belinda WSxx sounders, SF100 WSST/WSND and Hera WSST/WSND sounders



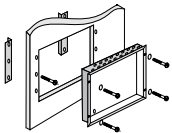
### DeepBase R

- Deep base accessory
- Color - red (RAL 3020)
- Application for mounting on rough surfaces, pipelines, floating ceilings, etc
- Compatible with SensoIRIS WSxx sounders, SF100 RSST/RSND and Hera WSST/WSND sounders



### Fireray One

- Reflective smoke beam detector
- Auto-alignment protocol
- Operating voltage: 14 - 36VDC
- Operating current: 5mA
- Low current consumption
- Signal output: Individual Alarm and Fault relays (VFCO) 2A @ 30 VDC
- Operating distance: 5 - 120m (for 5-50m - one reflector is required; for 50-120m - 4 reflectors are required)
- Suitable for installation into large and small places
- IP55
- Certified to EN 54-12



### MAG8Plus FLM Kit

- Kit for flush mounting
- For use on 25 mm thick dry wall
- Includes: 2 hangers, mounting screws
- Compatible with MAG8Plus



### IRIS FLM Kit

- Kit for flush mounting
- For use on 25 mm thick dry wall
- Includes: metal bottom and decorative metal frame, mounting screws
- Color grey, RAL7011
- Compatible with IRIS PRO, IRIS8 S



### PS2410

- Power supply unit
- 24 VDC/1A
- Metal box
- Transformer
- Complies with EN54-4



### SB-U

- Universal small plastic box
- For application with ML log memory module in installation with MAG8 fire alarm panel
- Transparent cover for easy visual inspection



# PROSTE

## PROGRAMMING SOFTWARE



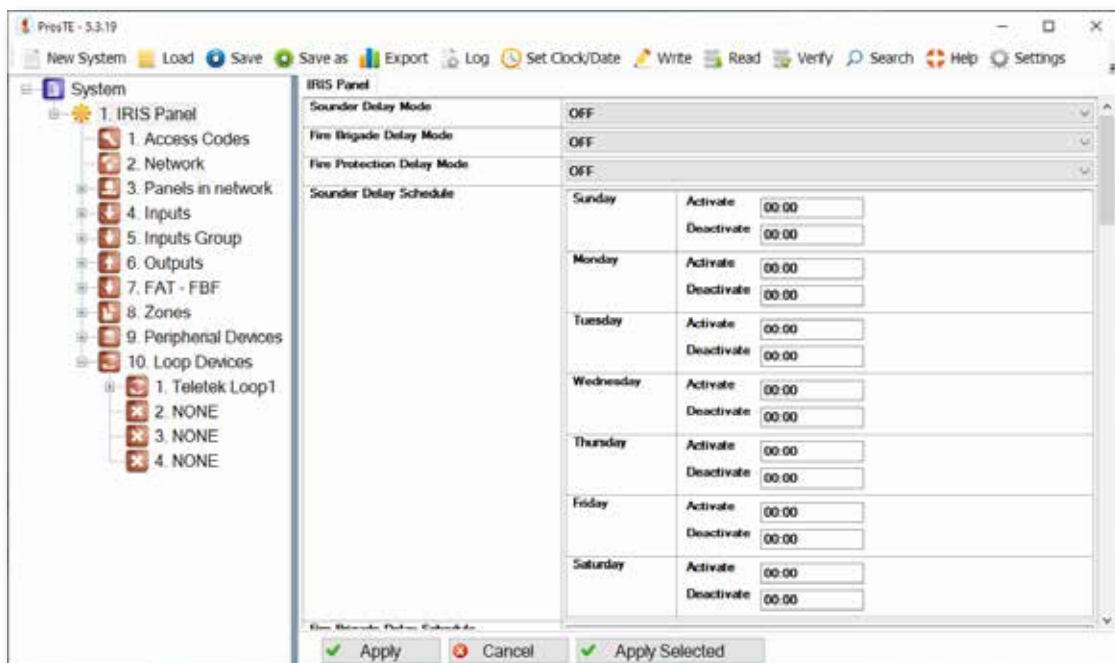
ProSTE is a software package for programming of Teletek Electronics intruder and fire alarm panels. The software allows fast and user-friendly programming.

### ProSTE Advantages

- Intuitive and user friendly graphic interface
- Easy programming of all system parameters
- Saves time and effort
- Allows creation of default configurations in TDF (Teletek data files) ready for use on site
- Decreases possibility for mistakes during programming
- No need to remember addresses or use programming manuals
- Download and update available at [www.teletek-electronics.com](http://www.teletek-electronics.com)
- Multi language support
- Help wizard

### Supported products

- Eclipse 8/8+/16/32/99
- BRAVO Wireless panel
- IRIS
- iRIS8
- SIMPO
- IRIS/SIMPO Repeater
- ARGUS
- TTE GPRS Standard
- TTE GPRS Simple
- TTE LAN
- TTE Combo
- TP2000 (ver. 8.xx)



# OBSERVER

## MONITORING SOFTWARE

Observer is a software application for monitoring of sites equipped with burglary or fire alarm panels produced by Teletek Electronics JSC.



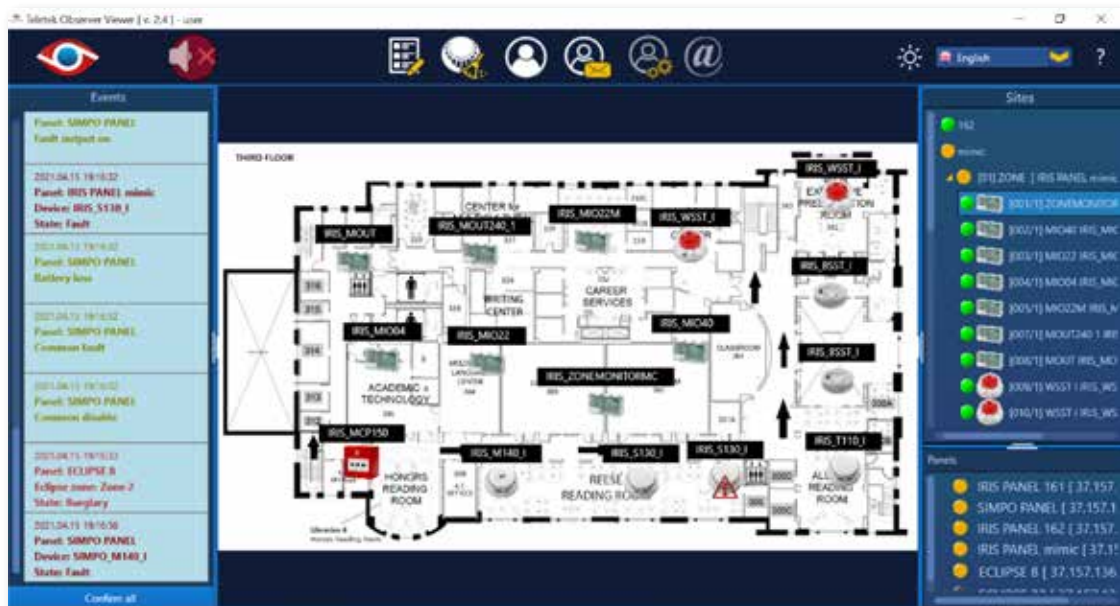
**OBSERVER**  
monitoring software

### Functional Specifications

- Supported panels for operation: ECLIPSE Series, IRIS Series, SIMPO, BRAVO
- Supports up to 64 panels ECLIPSE, BRAVO, IRIS and SIMPO - up to 1000 devices per IRIS panels, up to 500 devices per SIMPO panel, up to 30 devices per ECLIPSE panel (depends on the panel's model), up to 16 devices per BRAVO panel
- Monitors the condition and state of SensoIRIS fire detectors (Alarm, Normal, Fault) and Area(s) in ECLIPSE/BRAVO panels
- Shows full information about the fire detector in alarm state - zone, name, etc
- Monitors faults in the panel - Low Batt, AC Loss, etc
- Allows control over the Fire alarm panel - silence buzzer, silence sounders, evacuation, reset
- Allows control over the ECLIPSE/BRAVO alarm panel - Arming /Full, Stay, Sleep/, Disarming, Zone Bypass, PGM outputs switch ON/OFF
- Allows import of architectural plans and pictures on which the detectors are placed (JPG, BMP, PNG, TIF, GIF)
- Keeps printable event log
- Signals visually and audibly in case of alarm or fault
- ModBus protocol included

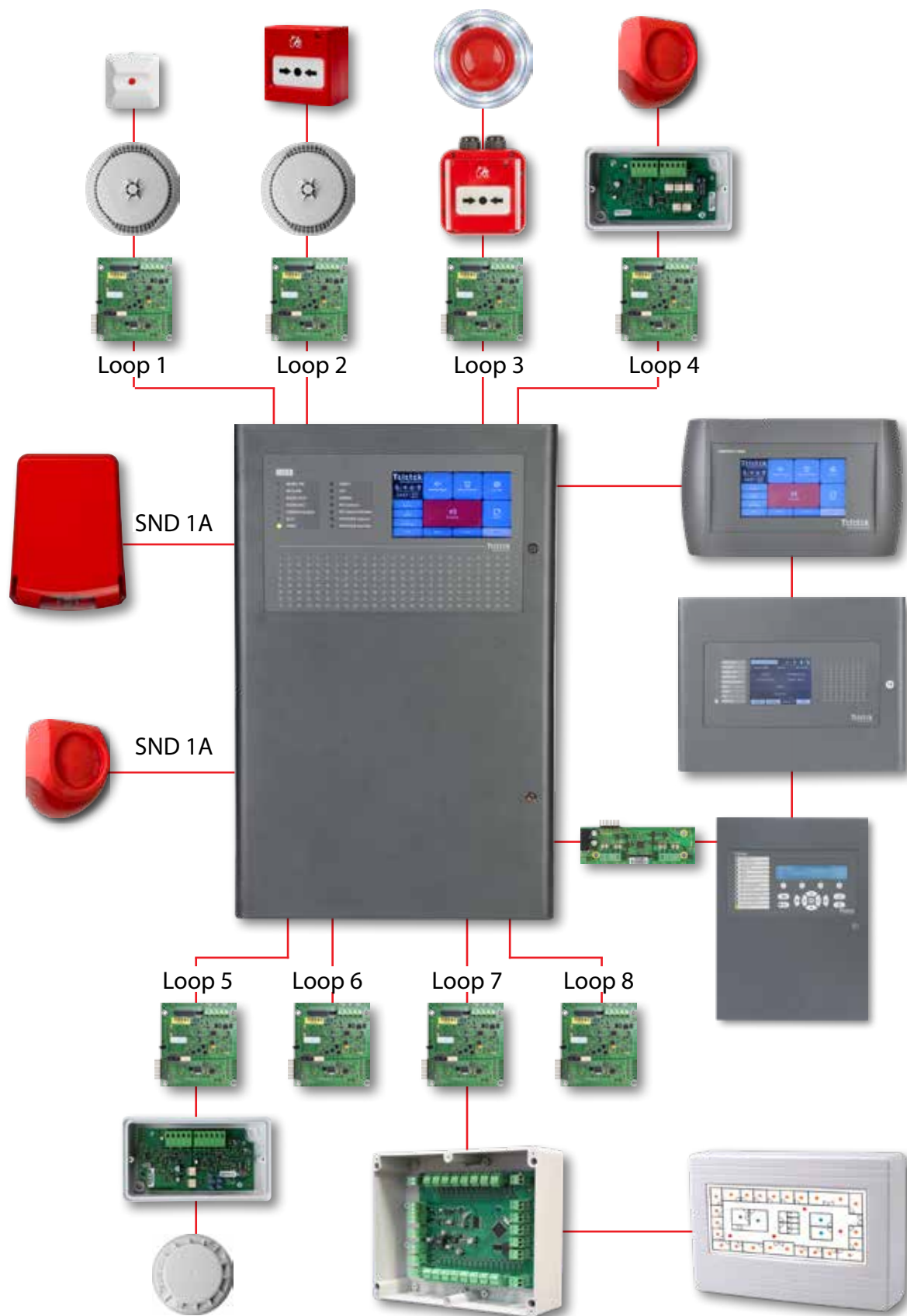
### Observer Advantages

- Integrated video verification with third-party video systems
- Direct ProsTE files import (Device name, zone name, panel name and panel IP address)
- Devices Drag and drop placement
- Panels control
- Minimum programming
- Simple and User Friendly Interface
- Windows 8.1/10 support
- Multi language support
- Protection by means of password and hardware key (Dongle)
- Event audio signalization



# iRIS8

## SYSTEM ARCHITECTURE





 **Star System**<sup>®</sup>  
Distribuzione sistemi di sicurezza

**AUTOMAZIONE**

---

Via Comunità Economica Europea, 41  
95045 Misterbianco (CT)  
+39 095 483 720  
info@starsystemsrl.it  
[www.starsystemsrl.it](http://www.starsystemsrl.it)