



 **Star System**[®]
Distribuzione sistemi di sicurezza

CATALOGO

Fanvil

TELEFONIA

Catalogue

01	About Fanvil
02	Fanvil A&V-IoT Product Family
04	Fanvil Distribution Network
05	Technology Partners
06	SIP Audio/Video Desk Phone
08	V Series High-end IP Phone
12	X Series IP Phone/ Call Center Phone
22	XU Series IP Phone
28	H Series Hotel IP Phone
32	ATA Gateway
34	Security Industry Audio/Video Products
36	i1 Series Audio/Video Intercom
42	i5 Series Indoor Station
48	i6/i3/i2 Series Door Phone
56	Console IP Phone
60	Audio/Video Gateway
64	Accessories
65	FDPS and FDMS



About Fanvil

Fanvil Technology Co., Ltd. (Fanvil) is a leading global provider of A&V-IoT (Audio&Video-IoT) devices with three R&D centers in Beijing, Shenzhen and Suzhou, China, and two factories in Huizhou and Shangrao, China. Fanvil has focused on SIP unified communication technology innovation for 20 years and provides SIP phones and SIP security industrial products in the global market. As the pioneer in applying standardized network communication technology and Audio & Video technologies to build A&V-IoT, we are boosting the digital transformation for multiple industries.

Fanvil SIP products and communication solutions provide the bridge between people and our global network. With its advanced technology and design, Fanvil has powered different businesses in our community, transportation, education, healthcare, enterprises, etc.

Adhering to the core values of Efficient, Team Work, Integrity, Positive and Enterprising, Fanvil is committed to providing high-quality A&V-IoT devices, and building an intelligent world of infinite communication.

Fanvil A&V-IoT Product Family

SIP Audio/Video Desk Phone

V Series High-end IP Phone



ATA Gateway



X Series IP Phone/ Call Center Phone



XU Series IP Phone



H Series Hotel Phone



Security Industry Audio/Video Products

i1 Series Audio/Video Intercom



i18S



i16SV



i16S



i12



i10S/i10SV/i10SD

i5 Series Indoor Station



i57A



i56A



i55A



i53W



i52W



i51W

i6/i3/i2 Series Door Phone



i64



i63



i62



i61



i33V/i33VF



i32V



i31S



i30



i23S



i20S

Console IP Phone



A32i



X210i

Audio/Video Gateway



PA3



PA2S

FANVIL DISTRIBUTION NETWORK



North-America

America, Canada, Mexico

European

Germany, UK, France, Italy, Spain, The Netherlands, Russia, Greece, Poland, Belgium, Turkey, Moldova, Ukraine, Portugal, Slovenia, Lithuania, Romania, Bosnia and Herzegovina, Sweden, Bulgaria, Malta, Albania, Georgia, Czech Republic, Cyprus

South America/The Caribbean

Guatemala, Honduras, Costa Rica, The Dominican Republic, The Commonwealth of Dominica, Panama, Colombia, Venezuela, Suriname, Ecuador, Peru, Brazil, Bolivia, Paraguay, Uruguay, Argentina, Chile

Africa

South Africa, Togo, Morocco, Egypt, Ivory Coast, Ghana, Kenya, Tanzania, Uganda, Nigeria, Senegal, Tunisia, Namibia, Angola, Algeria

TECHNOLOGY PARTNERS



APAC

China, South Korea, India, UAE, Saudi Arabia, Indonesia, Singapore, Bangladesh, Iran, Malaysia, Vietnam, Thailand, Australia, New Zealand, Israel, Pakistan, Nepal





SIP Audio/Video Desk Phone

Business Aesthetics · Minimalist Office · Smart Communication

Fanvil SIP desk phones include four product series V, X, XU and H, covering full range production from entry level to high-end IP phones. They provide users with the best user experience to meet all the needs of business users for IP communications equipment, especially the enterprise market.



V Series High-end IP Phone

V Series is more than an efficient telephone but a delicate work of art, providing a smart and smooth business communication experience for executives and managers. As the high-end IP Phone featuring powerful functions, it offers an smart and all-in-one communication solution.



HIGHLIGHTS

V67 Flagship Smart Video Phone

HD⁺ HD Audio

Deliver HD audio with Opus, G.722 wideband codec

Antibacterial Surface Protection

Antibacterial material of the handset and keypad surface effectively inhibits more than 99.5% of bacteria growth

Android 9.0 OS

Based on Android 9.0 operating system, V67 provides a comprehensive SDK (developer kit) to meet the customization needs of industry applications and secondary development

Adjustable Touch Screen

7-inch adjustable touch screen (0° to 40°) for different lighting environments, making it easier to read the messages no matter sit or stand

HD⁺ HD Camera

Built-in 5 Mega-pixel 1080P camera with a camera lens cover, providing an enjoyable HD video collaboration



10-way Audio Conferencing

Support 10-way audio conferencing (including 2-party video calls) and 3-way video conferencing

Wireless Connection

Built-in 2.4GHz/5G WiFi and Bluetooth 4.2, realizing more flexible connectivity



Colorful Lighting Keypad

The lighting keypad not only pleases your eyes but also improves work efficiency as a status indicator

V Series High-end IP Phone



V67

- 7-inch (1024×600) adjustable IPS touch screen (0° to 40°)
- Based on Android 9.0 operating system
- 20 SIP lines, up to 116 DSS keys
- Antibacterial material of the handset and keypad surface effectively inhibits more than 99.5% of bacteria growth
- Colorful lighting keypad for specific scenario
- A built-in 5 Mega-pixel 1080P camera with a camera lens cover
- 10-way audio conference and 3-way video conference
- Built in 2.4G/5G Wi-Fi and Bluetooth 4.2
- Support wall-mounted installation (Optional WB107 Wall-mount Bracket)



V65

- 4.3-inch (480×272) adjustable IPS screen (0° to 40°)
- 20 SIP lines, up to 45 DSS keys
- Antibacterial material of the handset and keypad surface effectively inhibits more than 99.5% of bacteria growth
- Be able to receive video calls with video codec H.264
- HD audio with wideband codec G.722 & Opus
- 6-way audio conference
- Built in 2.4G/5G Wi-Fi and Bluetooth 4.2
- Support wall-mounted installation (Optional WB107 Wall-mount Bracket)



V64

- 3.5-inch (480×320) color LCD screen
- 12 SIP lines, up to 21 DSS keys
- HD audio with wideband codec G.722 & Opus
- 6-way audio conference
- Built in 2.4G/5G Wi-Fi and Bluetooth 4.2
- Dual Gigabit ports, integrate PoE
- Available to link with security products
- Support wall-mounted installation (Optional WB107 Wall-mount Bracket)



V62

- 2.7-inch (192×64) Dot-matrix screen
- 6 SIP lines, up to 15 DSS keys
- HD audio with wideband codec G.722 & Opus
- 6-way audio conference
- Dual Gigabit ports, integrate PoE
- EHS wireless headset, Bluetooth via BT20 and Wi-Fi via WF20
- Available to link with security products
- Support wall-mounted installation (Optional WB107 Wall-mount Bracket)

V Series High-end IP Phone Specification



Picture	V67	V65	V64	V62
Operating System	Android 9.0	Linux	Linux	Linux
Screen	7-inch (1024×600) IPS Touch Screen	4.3-inch (480×272) IPS Color-screen	3.5-inch (480×320) Color-screen	2.7-inch (192×64) Dot-matrix Screen
Backlight	√	√	√	√
Colorful Lighting Keypad	√	×	×	×
Adjustable Screen	√	√	×	×
DSS Keys	116 (29×4)	45(9×5)	21(7×3)	15(5×3)
SIP Lines	20	20	12	6
Audio Conference	10-way	6-way	6-way	6-way
Video Conference	3-way	×	×	×
Call Logs	1000	1000	1000	1000
Local Phonebook	2000	2000	1000	1000
Remote Phonebook	2000	2000	1000	1000
Action URL / URI	√	√	√	√
Video Call	√	Only receive video call	×	×
Video Codec	H.264	H.264	×	×
Camera	Built-in 5 Mega-pixel, 1080P@30fps	×	×	×
HD Audio	√	√	√	√
Wideband Codec	G.722,Opus	G.722,Opus	G.722,Opus	G.722,Opus
Narrowband Codec	G.711,G.729A/B, iLBC	G.711, G.723.1, G.726, G.729A/B, iLBC	G.711, G.723.1, G.726, G.729A/B, iLBC	G.711, G.723.1, G.726, G.729A/B, iLBC
HAC Handset	√	√	√	√
Bluetooth	Built-in Bluetooth4.2	Built-in Bluetooth4.2	Built-in Bluetooth4.2	Via USB Dongle BT20
WiFi	Built-in 2.4G/5G WiFi	Built-in 2.4G/5G WiFi	Built-in 2.4G/5G WiFi	Via USB Dongle WF20
IP Mode	IPv4/IPv6/IPv4&IPv6	IPv4/IPv6/IPv4&IPv6	IPv4/IPv6/IPv4&IPv6	IPv4/IPv6/IPv4&IPv6
Network	10/100/1000 Mbps	10/100/1000 Mbps	10/100/1000 Mbps	10/100/1000 Mbps
PoE	√	√	√	√
EHS Headset	√	√	√	√
Desktop/ Wall-mounted	√	√	√	√

X Series IP Phone/ Call Center Phone

The stylish business appearance and HD color screen of Fanvil X series highlight the elegance of office work; HD audio/video phone calls make it efficient and quick to communicate. It performs excellently in various application scenarios!



HIGHLIGHTS

X7A+CM60 Android IP Phone with Camera

HD⁺ HD Audio

Support wideband codec G.722 and Opus; Provide users a superb and clear audio call experience

7-inch Color Touch Screen

Bring users a smoother operation experience and a better visual experience

20 SIP Lines

Built-in Bluetooth

Easy to connect bluetooth headset via built-in Bluetooth and helping users to handle multitask

Built-in WiFi

Easy to connect WiFi via built-in 2.4G/5G WiFi and getting rid of messy cables

HD Video Call

Match with 1080P Fanvil CM60 HD USB Camera; Realize HD video image on the full screen and bring users a brand new video call experience

112 DSS 112 DSS Keys

Provide swifter function keys and enhance the efficiency on work



Fanvil CM60 Portable USB HD Camera

Video resolution: 1080P.

It can be flexibly installed on the phone, computer, or desktop. With an adjustable cover, CM60 can protect users' privacy well. Wider view angle brings a wider view.

X Series IP Phone/Call Center Phone

X7A+CM60



- With Android 9.0 OS, it brings a smoother and more intelligent operation experience
- Featuring a 7-inch color touch screen, it gives users an ideal visual experience
- 112 DSS keys on the screen for setting usual functions
- Support video codec H.264, providing premium HD video calls with 1080P CM60 camera
- Provide premium HD audio and wideband codec G.722 & Opus
- Built-in 2.4G/5G Wi-Fi and Bluetooth 4.2
- EHS wireless headset
- 3-way conference and SIP hotspot
- For meeting businessmen's needs, it supports the third party APP
- Dual Gigabit ports, Integrated PoE

X7A



- With Android 9.0 OS, it brings a smoother and more intelligent operation experience
- Featuring a 7-inch color touch screen, it gives users an ideal visual experience
- 112 DSS keys on the screen for setting usual functions
- Support video codec H.264, providing premium HD video calls with 1080P optional CM60 camera
- Provide premium HD audio and wideband codec G.722 & Opus
- Built-in 2.4G/5G Wi-Fi and Bluetooth 4.2
- EHS wireless headset
- 3-way conference and SIP hotspot
- For meeting businessmen's needs, it supports the third party APP
- Dual Gigabit ports, Integrated PoE

X7



- 7-inch color screen brings users an ideal visual experience
- 127 DSS keys on the screen for setting usual functions
- Be able to receive video calls with video codec H.264
- Provide premium HD audio and wideband codec G.722 & Opus
- 20 SIP lines
- Built-in Bluetooth 4.2, Wi-Fi connectivity via Wi-Fi dongle
- EHS wireless headset
- 6-way conference and SIP hotspot
- Dual Gigabit ports, Integrated PoE

X7C



- 5-inch color screen, brings users an ideal visual experience
- 60 DSS keys on the screen for setting usual functions
- Be able to receive video calls with video codec H.264
- HD audio with wideband codec G.722 & Opus
- 20 SIP lines
- Built-in Bluetooth 4.2, Wi-Fi connectivity via Wi-Fi dongle
- EHS wireless headset
- 6-way conference and SIP hotspot
- Dual Gigabit ports, Integrated PoE

X210



- 4.3-inch main color screen, 2x3.5-inch side color screens for DSS keys
- Up to 106 DSS keys provide for easy and quick feature customization such as BLF and speed dial
- Be able to receive video calls with video codec H.264
- Provide premium HD audio and wideband codec G.722 & Opus
- 20 SIP Lines
- Built-in Bluetooth 4.2, Wi-Fi connectivity via Wi-Fi dongle
- EHS wireless headset
- 6-way conference and SIP hotspot
- Dual Gigabit ports, Integrated PoE

X2P/X2C



- Professional IP Phone customized for call center
- 2.8-inch (320x240) color screen(X2P)
- 128x48 black-and-white screen(X2C)
- 2 SIP lines
- Call center headset (RJ9 port, 3.5mm jack)
- LED keypads of Mute, call holding and auto answering
- Off-hook/on-hook by pedal switch
- 10/100Mbps Ethernet, Integrated PoE (X2P)
- EHS wireless headset
- 3-way conference

X Series IP Phone/Call Center Phone

X3SG Pro



- 2.8-inch 320×240 color screen
- HD audio with wideband audio codec G.722 & Opus
- 4 SIP lines
- Newly-added phone book/voice message button
- 2 line keys with LED light
- Dual Gigabit ports, Integrated PoE
- EHS wireless headset
- 6-way conference
- Support IPv4, IPv6 protocols
- Desktop/Wall-mounted installation

X3SG



- 2.8-inch 320×240 color screen
- HD audio with wideband audio codec G.722 & Opus
- 4 SIP lines
- Newly increased phone book/ voice message button
- 2 line keys with LED light
- Dual Gigabit ports, Integrate PoE
- EHS wireless headset
- Support IPv4, IPv6 protocols
- Desktop/ wall-mounted installation

X3SG Lite



- 2.3 inch 132×64 black-and-white dot matrix screen
- HD audio with wideband audio codec G.722 & Opus
- 2 SIP lines
- Newly added phone book/voice message button
- 2 line keys with LED light
- Dual Gigabit ports, integrate PoE
- 6-way conference
- EHS wireless headset
- Support IPv4, IPv6 protocols
- Desktop/Wall-mounted installation

X3S Pro/X3SP Pro



- 2.4-inch 320×240 color screen
- HD audio with wideband audio codec G.722 & Opus
- 4 SIP lines
- Newly added phone book/voice message button
- 2 line keys with LED light
- Dual megabit ports, Integrated PoE(X3SP Pro)
- 6-way conference
- EHS wireless headset
- Support IPv4, IPv6 protocols
- Desktop/Wall-mounted installation



X3S/X3SP

- 2.4-inch 320×240 color screen
- HD audio with wideband audio codec G.722
- 4 SIP lines
- Newly increased phone book/ voice message button
- 2 line keys with LED light
- EHS wireless headset
- Support IPv4 protocol
- Integrated PoE (X3SP)
- Desktop/Wall-mounted installation



X3S Lite/X3SP Lite

- 2.3-inch 132×64 screen
- HD audio with wideband audio codec G.722 & Opus
- 2 SIP lines
- Newly added phone book/voice message button
- 2 line keys with LED light
- Dual megabit ports, Integrated PoE (X3SP Lite)
- 6-way conference
- EHS wireless headset
- Support IPv4, IPv6 protocols
- Desktop/Wall-mounted installation



X3SW

- 2.4-inch 320×240 color screen
- HD audio with wideband codec G.722 and Opus
- Built-in 2.4G WiFi
- 4 SIP lines
- 6-way conference
- EHS wireless headset
- Support IPv4, IPv6 protocols
- Desktop/Wall-mounted installation



X1S/X1SP/X1SG

- 128×48 dot-matrix screen with backlight
- HD audio with wideband audio codec G.722 & Opus
- 2 SIP lines
- Newly increased phone book/ voice message button
- 2 line keys with LED light
- EHS wireless headset
- Support IPv4, IPv6 protocols
- Integrated PoE (X1SP&X1SG)
- Desktop/Wall-mounted installation

X Series IP Phone/Call Center Phone Specification



X7A+CM60



X7A



X7

Picture	X7A+CM60	X7A	X7
Main Screen	1024X600 7-inch Color Touch Screen	1024X600 7-inch Color Touch Screen	800X480 7-inch Color Touch Screen
Side Screen	×	×	×
Video Codec	H.264	H.264	H.264
Video Call	√	Only receive video from the calling side (1080P)	Only receive video from the calling side (1080P)
Camera	Connected with CM60 USB Camera	CM60 USB Camera (optional)	×
DSS Keys	112	112	127
SIP Lines	20	20	20
Lines Keys	×	×	×
Local Phone Book	2000	2000	2000
Call Log	1000	1000	1000
Audio conferencing	3-way conference	3-way conference	6-way conference
IPv6	×	×	√
HD Audio	√	√	√
Wideband Codecs	G.722,Opus	G.722,Opus	G.722,Opus
Bluetooth	Built-in Bluetooth4.2	Built-in Bluetooth4.2	Built-in Bluetooth4.2
WiFi	Built-in 2.4G/5G WiFi	Built-in 2.4G/5G WiFi	Via USB Dongle
PoE	√	√	√
Network	10/100/1000 Mbps	10/100/1000 Mbps	10/100/1000 Mbps
EHS Headset	√	√	√
Foot Stand	40° and 50°	40° and 50°	40° and 50°



X7C



X210



X2P/X2C

800X480 5-inch Color Screen	480X272 4.3-inch Color Screen	320X240 2.8-inch Color Screen (X2P) 128X48 Lattice Screen (X2C)
×	800X320 Two 3.5-inch Color Screens	×
H.264	H.264	×
Only receive video from the calling side (1080P)	Only receive video from the calling side (1080P)	×
×	×	×
60	106	×
20	20	2
12	10	×
2000	2000	500
1000	1000	600
6-way conference	6-way conference	3-way conference
√	√	×
√	√	√
G.722,Opus	G.722,Opus	G.722
Built-in Bluetooth4.2	Built-in Bluetooth4.2	×
Via USB Dongle	Via USB Dongle	×
√	√	X2P(√) X2C(×)
10/100/1000 Mbps	10/100/1000 Mbps	10/100Mbps
√	√	√
40°and 50°	40° and 50°	1 Fixed angle

X Series IP Phone/Call Center Phone Specification



Picture	X3SG Pro	X3SG	X3SG Lite	X3S Pro/X3SP Pro
Screen	320×240 2.8-inch Color Screen	320×240 2.8-inch Color Screen	132×64 2.3-inch Dot-matrix Screen	320×240 2.4-inch Color Screen
SIP Lines	4	4	2	4
Lines Keys	2	2	2	2
Audio Conference	6-way conference	3-way conference	6-way conference	6-way conference
Local Phone Book	1000	1000	1000	1000
Call Log	600	600	600	600
IPv6	√	√	√	√
HD Audio	√	√	√	√
Narrowband Codecs	G.711, G.723.1, G.726, G.729A/B, iLBC	G.711,G.729A/B, iLBC	G.711, G.723.1, G.726, G.729A/B, iLBC	G.711, G.723.1, G.726, G.729A/B, iLBC
Wideband Codecs	G.722,Opus	G.722,Opus	G.722,Opus	G.722,Opus
WiFi	×	×	×	×
PoE	√	√	√	X3S Pro × X3SP Pro √
Network	10/100/1000Mbps	10/100/1000Mbps	10/100/1000Mbps	10/100Mbps
EHS Headset	√	√	√	√
Wall-mounted	√	√	√	√
Foot Stand	45° and 50°	45° and 50°	45° and 50°	45° and 50°



X3S/X3SP



X3S Lite/X3SP Lite



X3SW



X1S/X1SP/X1SG

320×240 2.4-inch Color Screen	132×64 2.3-inch Dot-matrix Screen	320×240 2.4-inch Color Screen	128×48 Dot-matrix with Backlight
4	2	4	2
2	2	2	2
3-way conference	6-way conference	6-way conference	3-way conference
500	1000	1000	1000
600	600	600	600
×	√	√	√
√	√	√	√
G.711, G.723.1, G.726, G.729A/B, iLBC	G.711, G.723.1, G.726, G.729A/B, iLBC	G.711, G.723.1, G.726, G.729A/B, iLBC	G.711,G.726, G.729A/B, iLBC
G.722	G.722,Opus	G.722,Opus	G.722,Opus
×	×	Built-in 2.4G WiFi	×
X3S × X3SP √	X3S Lite × X3SP Lite √	×	X1S × X1SP √ X1SG √
10/100Mbps	10/100Mbps	10/100Mbps	10/100Mbps: X1S/X1SP 1000Mbps: X1SG
√	√	√	√
√	√	√	√
45° and 50°	45° and 50°	45° and 50°	45° and 50°

XU Series IP Phone

Fanvil XU series are high-end IP phones. With strong complete functions, HD audio and enriched application scenarios, they can provide a quality and efficient collaborative experience and significantly improve work efficiency and team performance.



HIGHLIGHTS

X6U High-end IP Phone

HD³ Crystal-clear Audio

Wideband codec of G.722 and Opus in this device deliver you an immersive HD audio experience in both high band and low band with the network

LED Line Key

Newly add 5 LED indicator light line keys

Color Screens

4.3-inch main Color Screen
2×2.4-inch side Color Screens

SIP 20 SIP Lines



Built-in Bluetooth

Fanvil X6U helps you work with Bluetooth headset flexibly

60 DSS Keys

Offer you an intuitive and faster access to multiple functions and maximize your productivity



Greater Interoperability and Collaboration

Matched with accessories, like EHS headset via EHS Cable, WiFi via WiFi dongle and built-in Bluetooth, Fanvil X6U is designed to encourage your flexibility on work.

XU Series IP Phone



X6U

- 4.3-inch 480x272 main color screen, 2 x 2.4-inch 320x240 side color screens
- HD audio and wideband codec G.722 & Opus
- 20 SIP Lines
- 60 DSS keys, 5 line keys with LED light
- 6-way conference
- Built-in Bluetooth 4.2, Wi-Fi connectivity via Wi-Fi dongle
- EHS wireless headset
- Be able to receive video calls with video codec H.264
- Support IPv4, IPv6 protocols
- Dual Gigabit ports, Integrated PoE



X5U

- 3.5-inch 480x320 color main screen, 2.4-inch 320x240 side color screen
- HD audio and wideband codec G.722 & Opus
- 16 SIP lines
- 30 DSS keys, 4 line keys with LED light
- 6-way conference
- Dual Gigabit port, PoE integrated
- Built-in Bluetooth 4.2, Wi-Fi connectivity via Wi-Fi dongle
- EHS wireless headset
- Support IPv4, IPv6 protocols
- Desktop/Wall-mounted installation



X5U-R

- Well-marked red
- 3.5-inch 480x320 color main screen, 2.4-inch 320x240 side color screen
- HD audio with wideband codec G.722 & Opus
- 30 DSS keys, 4 line keys with LED light
- 6-way conference
- Dual Gigabit ports, Integrated PoE
- Built-in Bluetooth 4.2, Wi-Fi connectivity via Wi-Fi dongle
- EHS wireless headset
- Support IPv4, IPv6 protocols
- Desktop/Wall-mounted installation

X4U



- 2.8-inch 320x240 main color screen, 2.4-inch 320x240 side color screen
- HD audio and wideband codec G.722
- 12 SIP Lines
- 30 DSS keys, 3 line keys with LED light
- 6-way conference
- Dual Gigabit port, Integrated PoE
- Bluetooth connectivity via USB dongle, Wi-Fi connectivity via Wi-Fi dongle
- Support EHS wireless headset
- Support IPv4, IPv6 protocols
- Desktop/Wall-mounted installation

X3U Pro



- 2.8-inch 320×240 color screen
- HD audio with wideband codec G.722 & Opus
- 6 SIP lines
- 6-way audio conference
- Dual Gigabit port, integrated PoE
- EHS wireless headset
- Support IPv4, IPv6 protocols
- Desktop/Wall-mounted installation

X3U



- 2.8-inch 320x240 color screen
- HD audio with wideband codec G.722 & Opus
- 6 SIP lines
- 3 line keys with LED light
- Dual Gigabit port, PoE integrated
- EHS wireless headset
- Support IPv4, IPv6 protocols
- Desktop/Wall-mounted installation

XU Series IP Phone Specification



X6U



X5U



X5U-R

Picture	X6U	X5U	X5U-R
Main Screen	480x272 4.3-inch Color Screen	480X320 3.5-inch Color Screen	480X320 3.5-inch Color Screen
Side Screen	320X240 Two 2.4-inch Color Screens	320X240 2.4-inch Color Screen	320X240 2.4-inch Color Screen
The Color	Black	Black	Red
DSS Keys	60	30	30
Lines	20	16	16
Line Keys	5	4	4
Local Phone Book	2000	2000	2000
Call Log	1000	1000	1000
Audio conferencing	6-way conference	6-way conference	6-way conference
IPv6	√	√	√
HD Audio	√	√	√
Wideband Codec	G.722, Opus	G.722, Opus	G.722, Opus
Bluetooth	Built-in Bluetooth 4.2	Built-in Bluetooth 4.2	Built-in Bluetooth 4.2
WiFi	Via WiFi dongle	Via WiFi dongle	Via WiFi dongle
PoE	√	√	√
Network	10/100/1000 Mbps	10/100/1000 Mbps	10/100/1000 Mbps
EHS Headset	√	√	√
Wall-mounted	√	√	√
Foot Stand	45° and 50°	45° and 50°	45° and 50°



X4U



X3U Pro



X3U

320X240 2.8-inch Color Screen	320X240 2.8-inch Color Screen	320X240 2.8-inch Color Screen
320X240 2.4-inch Color Screen	×	×
Black	Black	Black
30	×	×
12	6	6
3	3	3
1000	1000	1000
1000	600	600
6-way conference	6-way conference	3-way conference
√	√	√
√	√	√
G.722, Opus	G.722, Opus	G.722, Opus
Via USB Dongle	×	×
Via WiFi dongle	×	×
√	√	√
10/100/1000 Mbps	10/100/1000 Mbps	10/100/1000 Mbps
√	√	√
√	√	√
45° and 50°	45° and 50°	45° and 50°

H Series Hotel IP Phone

Designed with the elegant appearance, leading technology and powerful functions, Fanvil H series hotel IP phones can provide users a new communication experience. They can not only meet the needs of the hotel, but also be suitable for rich application scenarios.



HIGHLIGHTS

H5W Hotel IP Phone



Stylish and Elegant

Designed for hospitality industry, reflect the stylish and elegant taste of high-end hotel



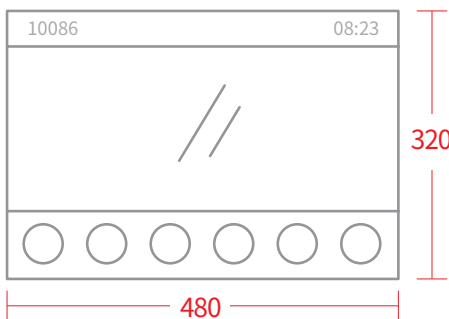
Built-in WiFi

With built in 2.4G WiFi, H5W enables wireless connection, making the deployment more flexible



6 Customized Quick Buttons

Set cleaning, booking, front office, meal and waking services



Color Screen with Friendly Interface

3.5-inch(480×320 pixel) color-screen display can be used to show hotel information. it is very intuitive for users.



USB Port for Charging

1 USB port for charging cellphones/pads, no need to worry if your plug is not standard locally.

H Series Hotel IP Phone



H5/H5W

- 2 available colors(White & Black) , seamlessly integrated with different hotels' styles
- 3.5-inch (480×320) color screen
- 1 USB port for phone charging
- 2 SIP Lines
- 6 customized soft keys for speed dial functions including housekeeping, ticket-booking, switchboard, ordering food, wake-up call service, etc.
- Be able to receive video calls with video codec H.264
- Provide premium HD audio with wideband codec G.722 & Opus
- Built-in 2.4G WiFi (H5W)
- Integrated PoE
- Call hold, Redial, Call transfer, Hotline, Voice Mail, etc.
- Support configurable dial plan
- Fanvil unique Hotspot function- several phones can share one number from server, and each phone has its extension number to contact/transfer/conference others



H3/H3W

- 2 available colors(White & Black) , seamlessly integrated with different hotels' styles
- Fashion and elegant appearance
- 6 customized soft keys for speed dial functions including housekeeping, ticket-booking, switchboard, ordering food, wake-up call service, etc.
- 1 USB charging port for cellphones, iPad and, etc.
- Integrated PoE
- Provide premium HD audio with wideband codec G.722&Opus
- Built-in 2.4G WiFi (H3W)
- Fanvil unique Hotspot function- several phones can share one number from server, and each phone has its extension number to contact/transfer/conference others



H2U

- 2 available colors (White & Black)
- With tiny and fashion outlook, comfortable hand feeling, it can be applied to different scenarios like hotel, school, hospital, supermarket, residence and, etc.
- 2 SIP Lines
- Provide premium HD audio with wideband codec G.722 & Opus
- 10 speed dial keys for customizing service hotlines
- 1 programmable key, which can be set to work with door phones for controlling the door remotely or other operations
- Desktop/Wall mounted installation
- Support handset/Hands-free mode
- Integrated PoE

H Series Hotel IP Phone Specification



Picture	H5W	H5	H3W	H3	H2U
The color	Black/White	Black/White	Black/White	Black/White	Black/White
Screen	480X320 3.5-inch Color Screen	480X320 3.5-inch Color Screen	×	×	×
Video Call Resolution	Only receive video from the calling side	×	×	×	×
Hardware Video Decoding	H.264	×	×	×	×
DSS Keys	6	6	6	6	1
Speed Dial Keys	×	×	×	×	10
SIP Lines	2	2	2	2	2
HD Audio	√	√	√	√	√
Wideband Codec	G.722,Opus	G.722	G.722,Opus	G.722	G.722,Opus
PoE	√	√	√	√	√
Network	10/100Mbps	10/100Mbps	10/100Mbps	10/100Mbps	10/100Mbps
WiFi	Built-in 2.4G WiFi	×	Built-in 2.4G WiFi	×	×
USB	1	1	1	1	×
Installation Mode	Desktop	Desktop	Desktop	Desktop	Desktop/Wall Mounted

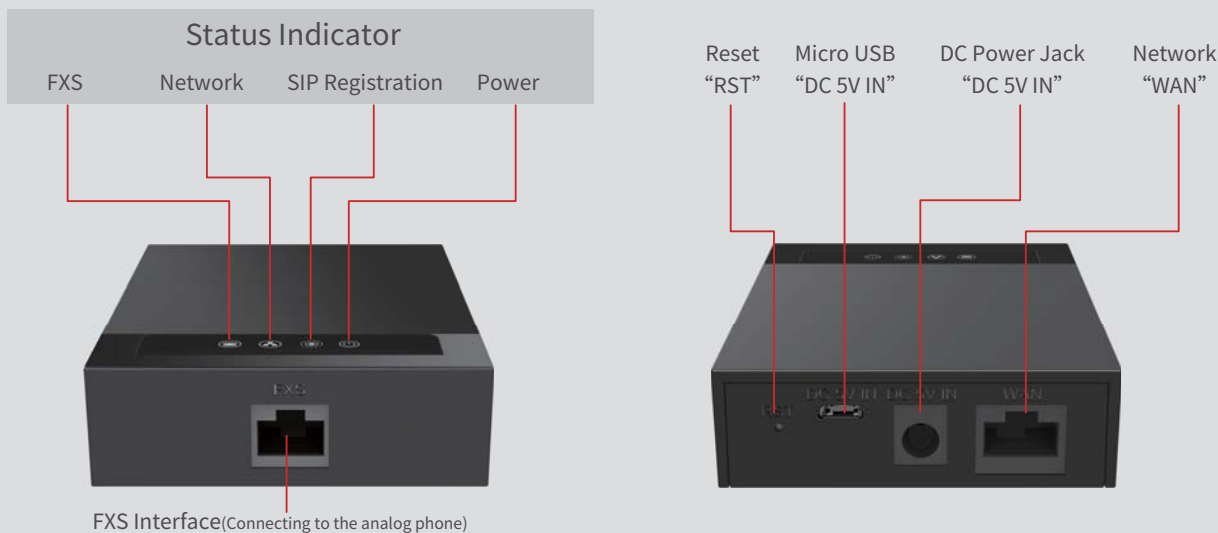
ATA Gateway

ATA Gateway is a SIP gateway with an easy-to-use FXS port. By migrating to IP voice with easy-to-install ATA, it enables users to take advantage of VoIP on analog phones. It provides convenient, stable and cost-effective communication solutions for individual, enterprise and operator to realize the deployment of VoIP.



GA10 ATA Gateway

Smooth Communication, Affordable and Portable



Highlights

Compact and Portable

Space-saving and portable with compact size

Simple Deployment

Support desktop and wall-mounted installation modes, simple-and-intuitive web configuration

3-way Audio Conference

Connected to the ATA gateway, analog phones are able to provide 3-way HD audio conferences

High Efficiency

It supports remote access to telephone system of enterprises via the Internet or telecommuting

USB Power Supply

Convenient-and-fast power supply via Micro USB interface

Full-scenes-matched

2 SIP lines, 1 FXS interface and 100Mbps network port, suitable for multiple working scenarios

Specification

System	Linux	Network	10/100 Mbps
SIP Lines	2 SIP Lines	Power Supply	DC 5V_1A or Micro USB
Button	Reset Button * 1	Working Temperature	0 ~ 45°C
Audio Codec	G.722, Opus, G.711(A/u), G.729A/B, G.726, iLBC	Working Humidity	10% to 95%
Conference	3-way Conference	Installation	Desktop / Wall-mounted
Caller ID Display	Bellcore, ETSI, NTT, DTMF-based CID	FXS	RJ11*1

Security Industry Audio/Video Products

High Compatibility · High Reliability · Easy Installation

Fanvil security industry audio/video products are compatible with mainstream IP PBX/IMS platform, enabling users to deploy the devices quickly. Fanvil security industry audio/video products are also characterized by background noise reduction, high-fidelity voice, waterproof, dust-proof and collision-proof protection design, wide temperature range, which can meet the special requirements in different scenarios.





i1 Series Audio/Video Intercom

Fanvil i1 Series Audio/Video Intercom have the advantages of HD audio, saving operation cost, quick deployment, easy maintenance and strong scalability. They also feature short-in and short-out interfaces to achieve the linkage of other security devices. Users can achieve the remote deployment and management via Fanvil Device Management System.





i16SV Video Intercom

Reliable Outdoor Emergency Intercom

Highlights

Elegant Design

Simple design and operation make it easy for users to operate

HD[®] HD Audio Intercom

Support G.722 HD audio, with voice intercom of high quality

HD Video Intercom

Built-in camera supports high-resolution video decoding, making video clearer and smoother

Wide Temperature Range

Wide temperature range from -30°C to 60°C can meet demands in adverse outdoor environment

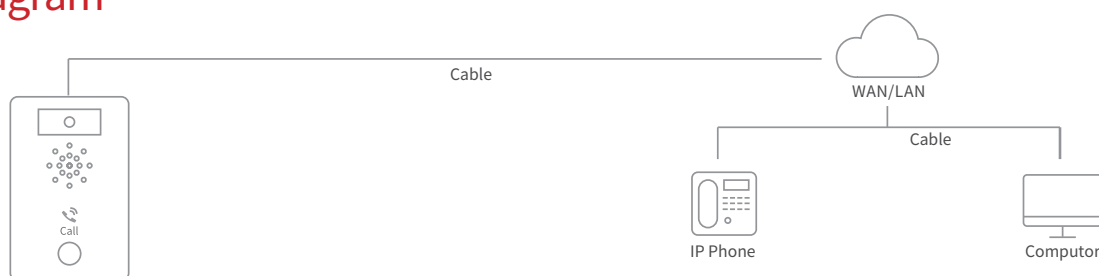
Multi-protection

IP54 or IP65 protection can effectively prevent dust and splash, suitable for multiple indoor scenarios

Simple Configuration Management

It is configured with webpage online, easy to be managed; batch deployment through Fanvil Device Management Solution (FDMS)

Diagram



i1 Series Audio/Video Intercom

i18S Video Intercom



- Standard SIP protocol, Compatible with major popular IP PBX/IMS platforms
- Built-in HD camera with infrared night vision, Adopt H.264 codec
- HD voice speech quality with built-in 3W speaker and Acoustic Echo Cancellor (AEC)
- IP65 waterproof and dustproof
- IK10 anti-collision with robust die-cast aluminum frame
- Report to the control center if the cover is removed with the design of anti-tamper alarm
- -40°C to 70°C wide range temperature adaptability
- Built-in 1 short circuit input interface and 1 short circuit output interface
- Support online management and upgrade

i16SV Video Intercom



- Standard SIP protocol, Compatible with major popular IP PBX/IMS platforms
- Built-in HD camera with infrared night vision, adopt H.264 codec
- HD voice speech quality with built-in 3W speaker and Acoustic Echo Cancellor (AEC)
- IP65 waterproof and dustproof
- IK10 anti-collision with robust die-cast aluminum frame
- Report to the control center if the cover is removed with the design of anti-tamper alarm
- -30°C to 60°C wide range of temperature adaptability (i16SV), -40°C to 70 °C (i16V)
- Built-in 2 short circuit input interfaces and 2 short circuit output interfaces
- Support online management and upgrade

i16S Audio Intercom



- Standard SIP protocol, Compatible with major popular IP PBX/IMS platforms
- HD voice speech quality with built-in 3W speaker and Acoustic Echo Cancellor (AEC)
- IP65 waterproof and dustproof
- IK10 anti-collision with robust die-cast aluminum frame
- Report to the control center if the cover is removed with the design of anti-tamper alarm
- -30°C to 60°C wide range of temperature adaptability
- Built-in 2 short circuit input interfaces and 2 short circuit output interfaces
- Support online management and upgrade

i12 Audio Intercom



- Standard SIP protocol, compatible with major popular IP PBX/IMS platforms
- HD voice speech quality with built-in 3W speaker and Acoustic Echo Canceller (AEC)
- Optional for one button or dual buttons
- Built-in 2 short circuit input interfaces and 2 short circuit output interfaces
- Support external active speaker output port for HD quality broadcasting
- Support online management and upgrade
- -40~70°C wide range temperature adaptability
- IP65 waterproof and dustproof
- IK10 anti-collision with robust die-cast aluminum frame

i10S/i10SV/i10SD Audio/Video Intercom



- Standard SIP protocol, Compatible with major popular IP PBX/IMS platforms
- Built-in HD camera with infrared night vision, adopt H.264 codec
- Built-in 1W speaker and Acoustic Echo Canceller (AEC)
- IP54 waterproof and dustproof
- -20°C to 50°C wide range of temperature adaptability
- Built-in 1 short circuit input interface and 1 short circuit output interface
- Support online management and upgrade

i1 Series Audio/Video Intercom Specification



i18S Video Intercom



i16SV Video Intercom



i16S Audio Intercom

Picture	i18S Video Intercom	i16SV Video Intercom	i16S Audio Intercom
SIP Lines	2	2	2
Camera	√	√	×
Standalone Intercom No Central Unit/Server Needed	√	√	√
RTSP	√	√	×
ONVIF	√	√	×
HD Video (720P)	√	1080P	×
HD Audio	√	G.722,Opus	G.722,Opus
Linkage with Third Party IP Camera	×	√	√
Built-in Electric Relay	1	2	2
Access Control	1 or 2	1	1
Audio Line-in/Line-out	×	√	√
Power Supply PoE	√	√	√
Power Supply 12V DC	√	√	√
Tamper-Proof	√	√	√
Protection Level	IP65&IK10	IP65 & IK10	IP65 & IK10
Wide Temperature Range	-40°C~70°C	-30°C~60°C	-30°C~60°C
Power Amplifier	3W	3W	3W
Short Circuit Output	1	2	2
Short Circuit Input	1	2	2
Auto-Provisioning via DHCP/TR069 SIP PNP	√	√	√
Integration with Third Party Systems	√	√	√
TF cardreader	×	√	√
MP3 broadcast	×	√	√



i12 Audio Intercom



i10SV Video Intercom



i10SD Audio Intercom



i10S Audio Intercom

2	2	2	2
×	√	×	×
√	√	√	√
×	√	×	×
×	√	×	×
×	1080P	×	×
√	G.722,Opus	G.722,Opus	G.722,Opus
√	√	√	√
2	1	1	1
1 or 2	1	2	1
√	√	√	√
√	√	√	√
√	√	√	√
√	×	×	×
IP65&IK10	IP54	IP54	IP54
-40°C~70°C	-20°C~50°C	-20°C~50°C	-20°C~50°C
3W	1W	1W	1W
2	1	1	1
2	1	1	1
√	√	√	√
√	√	√	√
×	×	×	×
×	√	√	√

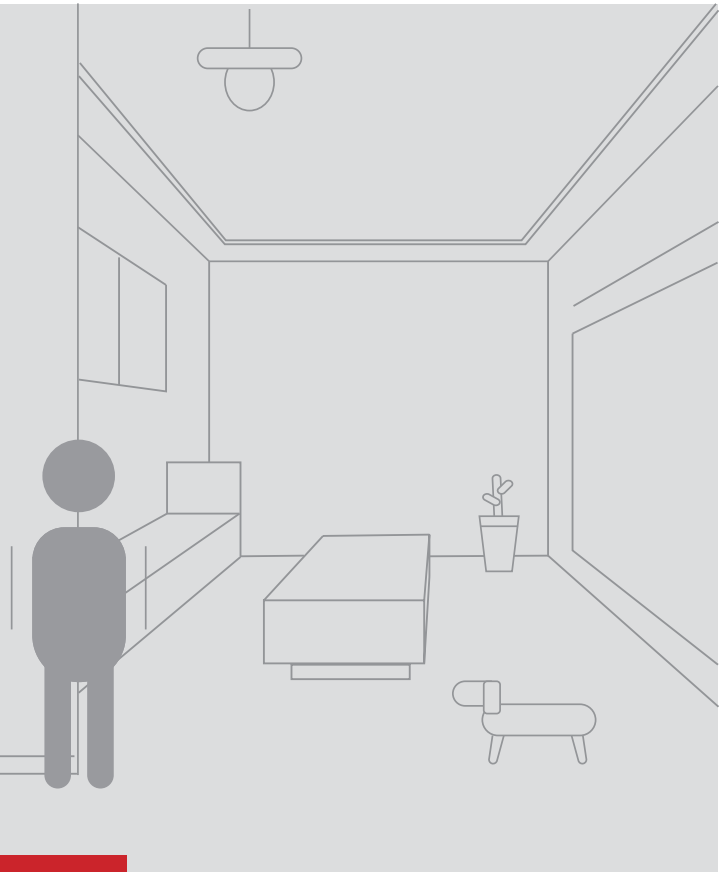
i5 Series Indoor Station

Fanvil i5 series indoor stations feature a clear color screen and 8 alarm input and industrial power input interfaces. It provides reliable security assurance and the easy access control service for the users, creating a safe and comfortable living environment.



i57A SIP Indoor Station

Fashionable Outlook, Easy Operation



Highlights

Elegant Design

Deliver a user-friendly experience with an elegant design and color screen

Smooth Operation System

Android 9.0 OS supports a greater compatibility and more powerful functions

Easy Operation

With touch screen design, it provide a smoother operation experience for the users

HD Audio and Video Communication

Users can communicate with visitors with superb audio and clear video images

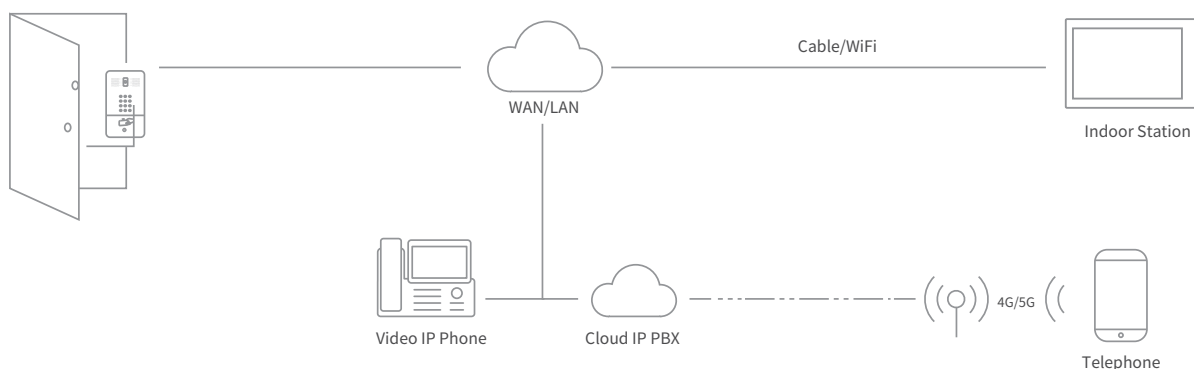
Support WiFi

It allows users to choose wireless connection for different requirements

Rich Interfaces

Flexible and powerful with rich interfaces to connect more security devices

Diagram



i5 Series Indoor Station



i57A SIP Indoor Station

- 10.1-inch 1280×800 capacitive color touch screen
- Android 9.0 operating system, meeting the customization needs of industry applications and secondary development
- Aluminum panel design, reliable and durable
- Built-in cool lighting effects, which can be set as status indicators
- Check real-time video of door phones with H.264 video codec and 1080P high resolution
- HD voice speech quality with built-in 2W speaker and Acoustic Echo Canceller
- Built-in Bluetooth 5.0 and 2.4GHz/5G WiFi
- Support RS-485, 8 alarm input interfaces and 2 embedded relays
- Integrated Micro USB interface and maximum 256GB capacity TF card slot
- Wall-mounted installation, PoE integrated

i56A SIP Indoor Station



- 10.1 inch capacitive touch screen, sensitive touch
- Built-in 1W double speakers and AEC for achieving premium quality hands-free call
- Built-in 2.4G/5G WiFi and Bluetooth
- It supports the ONVIF protocol and can be used with a third-party VMS video management system to achieve 24-hours real-time monitoring and recording at the door
- Monitor over the video door phone and the image of authorized cameras
- Support visual intercom and remote door opening
- 1 pair of RS-485 interface for expanding smart home, defense area or ladder control connection
- 8 alarm input interfaces. It supports external fire/gas alarms connection for improving residential safety

i55A SIP Indoor Station



- 7-inch 1024×600 capacitive color touch screen
- Android 9.0 operating system, meeting the customization needs of industry applications and secondary development
- Five physical buttons, reliable and durable
- Check real-time video of door phones with H.264 video codec and 1080P high resolution
- HD voice speech quality with built-in 2W speaker and Acoustic Echo Canceller
- Built-in Bluetooth 5.0 and 2.4GHz/5G WiFi
- Support RS-485, 8 alarm input interfaces and 2 embedded relays
- Wall-mounted installation, PoE integrated

i53W SIP Indoor Station



- 7 inch capacitive touch screen, sensitive touch
- Built-in 2W speaker and AEC for achieving premium quality hands-free call
- Built-in 2.4G WiFi
- It supports the ONVIF protocol and can be used with a third-party VMS video management system to achieve 24-hours real-time monitoring and recording at the door
- Monitor over the video door phone and the image of authorized cameras
- Support visual intercom and remote door opening
- 1 pair of RS-485 interface for expanding smart home, defense area or ladder control connection
- 8 alarm input interfaces. It supports external fire/gas alarms connection for improving residential safety

i52W SIP Indoor Station



- 7 inch color screen can offer crystal clear visual experience
- Built-in 2W speaker and AEC for achieving premium quality hands-free call
- Built-in 2.4G WiFi
- It supports the ONVIF protocol and can be used with a third-party VMS video management system to achieve 24-hours real-time monitoring and recording at the door
- Monitor over the video door phone and the image of authorized cameras
- Support visual intercom and remote door opening
- 1 pair of RS-485 interface for expanding smart home, defense area or ladder control connection
- 8 alarm input interfaces. It supports external fire/gas alarms connection for improving residential safety

i51W SIP Indoor Station



- 4.3 inch color screen can offer crystal clear visual experience
- Built-in 1.5W speaker and AEC for achieving premium quality hands-free call
- Built-in 2.4G WiFi
- It supports the ONVIF protocol and can be used with a third-party VMS video management system to achieve 24-hours real-time monitoring and recording at the door
- Monitor over the video door phone and the image of authorized cameras
- Support visual intercom and remote door opening
- 1 pair of RS-485 interface for expanding smart home, defense area or ladder control connection
- 8 alarm input interfaces. It supports external fire/gas alarms connection for improving residential safety

i5 Series Indoor Station Specification



**i57A
Indoor Station**



**i56A
Indoor Station**

Picture	i57A Indoor Station	i56A Indoor Station
Operation System	Android 9.0	Android 9.0
Screen	1280×800 10.1-inch Capacitive Color Touch Screen	1280×800 10.1-inch Capacitive Color Touch Screen
SIP Lines	2	6
Phone Book	1000	1000
Video Codec	H.264	H.264
Video Resolution	1080P	1080P
HD Audio	√	√
Wideband Codec	G.722, Opus	G.722, Opus
PoE	√	√
Speaker Power	2W	1W(Double Speaker)
Bluetooth	Built-in Bluetooth 5.0	Built-in Bluetooth 5.0
WiFi	Built-in 2.4/5G WiFi	Built-in 2.4/5G WiFi
TF Card Slot	UP to 256G	UP to 256G
USB	1	1
IP mode	IPv4	IPv4
Network	10/100Mbps	10/100Mbps
Alarm Input	8	8
Short-circuit Output	2	2
Door-bell (Short-circuit Input)	1	×
RS485 Interface	1	1
Installation	Wall-mounted	Desktop/Wall-mounted



i55A
Indoor Station



i53W
Indoor Station



i52W
Indoor Station



i51W
Indoor Station

Android 9.0	Linux	Linux	Linux
1024×600 7-inch Capacitive Color Touch Screen	800×480 7-inch Color Touch Screen	800×480 7-inch Color Screen	480×272 4.3-inch Color Screen
2	6	4	4
1000	1000	×	×
H.264	H.264	H.264	H.264
1080P	1080P	1080P	1080P
√	√	√	√
G.722, Opus	G.722, Opus	G.722, Opus	G.722, Opus
√	√	√	√
1.5W(Double Speaker)	2W	2W	1.5W
Built-in Bluetooth 5.0	×	×	×
Built-in 2.4/5G WiFi	Built-in 2.4G WiFi	Built-in 2.4G WiFi	Built-in 2.4G WiFi
×	×	×	×
×	×	×	×
IPv4	IPv4/IPv6/IPv4&IPv6	IPv4/IPv6/IPv4&IPv6	IPv4/IPv6/IPv4&IPv6
10/100Mbps	10/100Mbps	10/100 Mbps	10/100 Mbps
8	8	8	8
2	×	×	×
1	×	×	×
1	1	1	1
Wall-mounted	Desktop/Wall-mounted	Desktop/Wall-mounted	Desktop/Wall-mounted

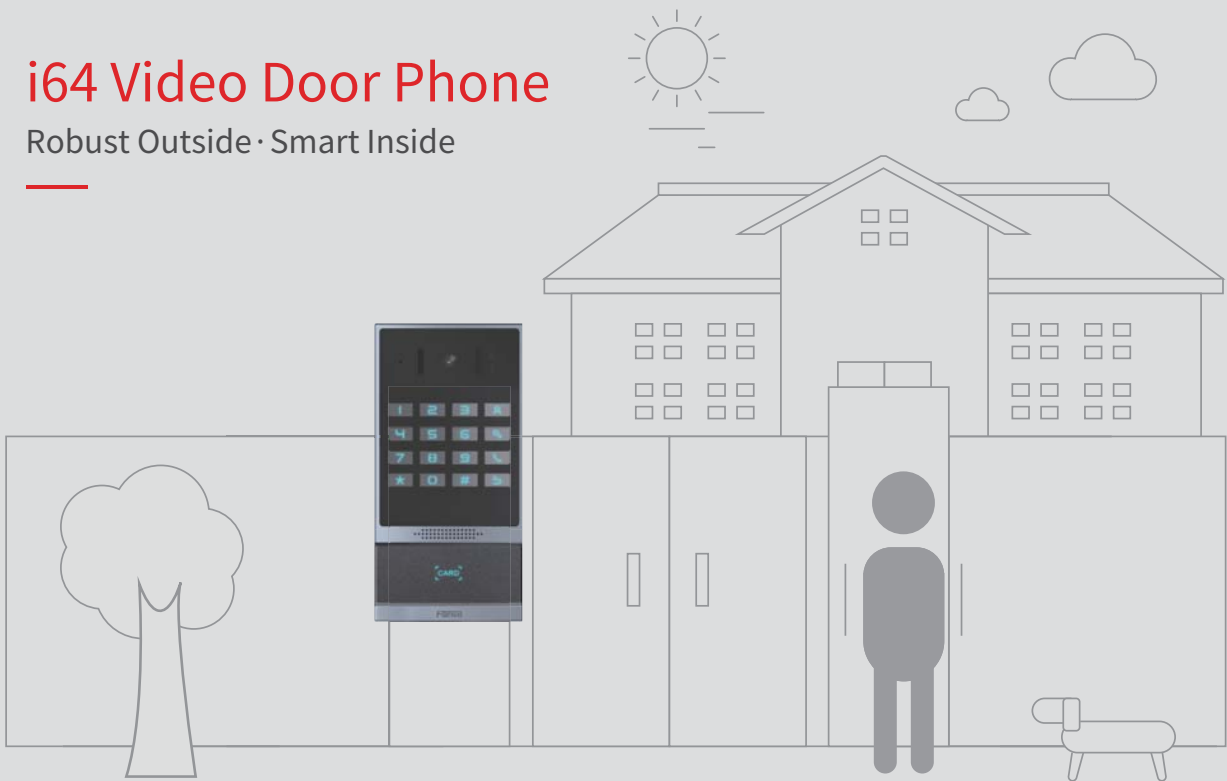
i6/i3/i2 Series Door Phone

Fanvil door phone is a SIP video door phone developed for users in the security industry. It may be installed indoor or outdoor to provide door access control of various buildings, with hands-free call and video monitoring functions.



i64 Video Door Phone

Robust Outside · Smart Inside



Highlights

Strong and Durable

High protection level IP66 and IK07, waterproof, dustproof and anti-collision

Smart and Convenient

Achieve smart access control with password, RFID/IC cards, NFC, indoor switch, remote DTMF and Time open door

Wide Temperature Range

Wide temperature range from -40°C to 70°C, it can work perfectly in most outdoor environments

HD Audio and Video

Built-in 2 Mega-pixel wide-angle camera with infrared night-vision feature, users can make audio/video calls via a speed-dial button

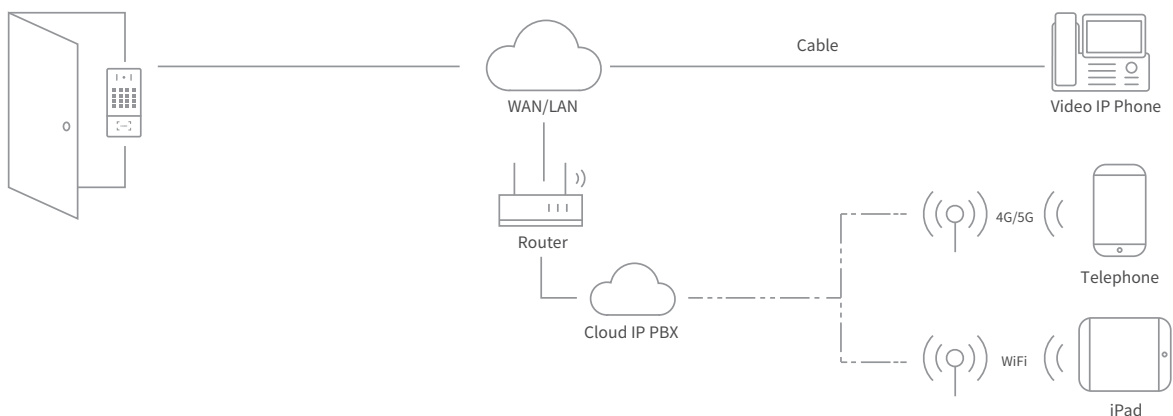
Remote Access Control with Mobile Phone

Residents can easily identify visitors via mobile phone App. With one-click door opening feature, it saves lots of time

Thoughtful and Helpful

Can be integrated with induction loop antenna, providing the more humanized service for the users with hearing impairment

Diagram



i6/i3/i2 Series Door Phone



i64 Video Door Phone

- Aluminum alloy design and a numeric keypad
- IP66 and IK07, wide range temperature from -40°C to 70°C
- Access control by password, RFID/IC cards, NFC, indoor switch, remote DTMF and Timed open door
- Built-in 2 Mega-pixel wide-angle camera with infrared night-vision feature
- Compatible with SIP and ONVIF protocols
- Line-out interface can be integrated with induction loop antenna
- Built-in maximum 128GB capacity TF card for image storage
- HD voice speech quality with built-in 2.5W speaker and Acoustic Echo Cancellor



i63 Video Door Phone

- Aluminum alloy design and 5 speed-dial buttons
- IP66 and IK07, wide range temperature from -40°C to 70°C
- Access control by RFID/IC cards, NFC, indoor switch, remote DTMF and Timed open door
- Built-in 2 Mega-pixel wide-angle camera with infrared night-vision feature
- Compatible with SIP and ONVIF protocols
- Line-out interface can be integrated with induction loop antenna
- Built-in maximum 128GB capacity TF card for image storage
- HD voice speech quality with built-in 2.5W speaker and Acoustic Echo Cancellor



i62 Video Door Phone

- Aluminum alloy design and single speed-dial button
- IP66 and IK07, wide range temperature from -40°C to 70°C
- Access control by RFID/IC cards, NFC, indoor switch, remote DTMF and Timed open door
- Built-in 2 Mega-pixel wide-angle camera with infrared night-vision feature
- Compatible with SIP and ONVIF protocols
- Line-out interface can be integrated with induction loop antenna
- Built-in maximum 128GB capacity TF card slot for image storage
- HD voice speech quality with built-in 2.5W speaker and Acoustic Echo Cancellor



i61 Video Door Phone

- Aluminum alloy design and single speed-dial touch button
- IP66 and IK07, wide range temperature from -40°C to 70°C
- Access control by RFID/IC cards, NFC, indoor switch, remote DTMF and Timed open door
- Built-in 2 Mega-pixel wide-angle camera with infrared night-vision feature
- Compatible with SIP and ONVIF protocols
- Line-out interface can be integrated with induction loop antenna
- Built-in maximum 128GB capacity TF card for image storage
- HD voice speech quality with built-in 2.5W speaker and Acoustic Echo Cancellor

i33V/i33VF Video Door Phone



- Standard SIP protocol, compatible with major popular IP PBX/IMS platforms
- Built-in HD camera with infrared night vision, adopt H.264 codec
- 128x48 dot-matrix screen with backlight
- Access control by call, IC/RFID card
- All-in-one (Access control, Intercom and Broadcasting)
- HD voice speech quality with built-in 3W speaker and Acoustic Echo Canceller (AEC)
- IP65 waterproof and dustproof
- IK10 anti-collision with robust die-cast aluminum frame
- -40°C to 70°C wide range temperature adaptability
- Support online management and upgrade

i32V Video Door Phone



- Standard SIP protocol, compatible with major popular IP PBX/IMS platforms
- Built-in HD Camera with infrared night vision
- Access control by call, IC/RFID card
- All-in-one (Access control, Intercom and Broadcasting)
- HD voice speech quality with built-in 3W speaker and Acoustic Echo Canceller (AEC)
- IP65 waterproof and dustproof
- IK10 anti-collision with robust die-cast aluminum frame
- -40°C to 70°C wide range temperature adaptability
- Support online management and upgrade

i31S Video Door Phone



- Standard SIP protocol, compatible with major popular IP PBX/IMS platforms
- Built-in HD Camera with infrared night vision
- Access control by call, code, IC/RFID card
- All-in-one (Access control, Intercom and Broadcasting)
- HD voice speech quality with built-in 3W speaker and Acoustic Echo Canceller (AEC)
- IP65 waterproof and dustproof
- IK10 anti-collision with robust die-cast aluminum frame
- -40°C to 70°C wide range temperature adaptability
- Support online management and upgrade

i23S Audio Door Phone



- Standard SIP protocol, compatible with major popular IP PBX/IMS platforms
- All-in-One (Access Control, Intercom and Broadcasting)
- Status indication icon for better operation
- Access control by call, IC/RFID card
- Telecom grade HD audio with built-in 3W speaker and AEC; adapt for noisy environment
- IP65 waterproof and dustproof
- IK10 anti-collision with robust die-cast aluminum frame
- -40°C to 70°C wide range temperature adaptability
- Support online management and upgrade

i6/i3/i2 Series Door Phone



i30 Video Door Phone

- Standard SIP protocol, compatible with major popular IP PBX/IMS platforms
- Built-in HD camera with infrared night vision, adopt H.264 codec
- Access control by call, code, IC/RFID card
- All-in-one (Access control, Intercom and Broadcasting)
- HD voice speech quality with built-in 3W speaker and Acoustic Echo Canceller (AEC)
- IP65 waterproof and dustproof
- Support online management and upgrade

i20S Audio Door Phone



- Standard SIP protocol, compatible with major popular IP PBX/IMS platforms
- Access control by call, IC/RFID card
- All-in-One (Access Control, Intercom and Broadcasting)
- HD voice speech quality with built-in 3W speaker and Acoustic Echo Canceller (AEC)
- Status indication icon
- Support online management and upgrade

i6/i3/i2 Series Door Phone Specification



Picture	i64	i63	i62	i61
Size	177.4x88x36.15mm	177.4x88x36.15mm	177.4x88x36.15mm	159.7x88x36.15mm
Speed-dial Button	Single speed-dial button	Five speed-dial buttons	Single speed-dial button	Single speed-dial touch button
SIP Lines	2	2	2	2
Numerical Keypad	√	×	×	×
Number of Access Cards	10000	10000	10000	10000
Built-in Electric Relay	√	√	√	√
Ways to Unlock Door	Local Password, DTMF,RFID/IC Card, NFC,Indoor Switch, Timed open door	DTMF,RFID/IC Card, NFC,Indoor Switch, Timed open door	DTMF,RFID/IC Card, NFC,Indoor Switch, Timed open door	DTMF,RFID/IC Card, NFC,Indoor Switch, Timed open door
Tamper-Proof	√	√	√	√
Integrated with Third Party Systems	√	√	√	√
Link with Third Party IP Camera	√	√	√	√
Wideband Codec	G722/Opus	G722/Opus	G722/Opus	G722/Opus
Video Codec	H.264	H.264	H.264	H.264
Built-in Camera	2 Mega-pixel	2 Mega-pixel	2 Mega-pixel	2 Mega-pixel
Power Amplifier	2.5W	2.5W	2.5W	2.5W
ONVIF	√	√	√	√
Supplement Light	IR Supplement	IR Supplement	IR Supplement	IR Supplement
RTSP	√	√	√	√
PoE	√	√	√	√
TF Card	Up to 128G	Up to 128G	Up to 128G	Up to 128G
Line-out Interface	√	√	√	√
Short Circuit Output	2	2	2	2
Short Circuit Input	3	3	3	3
RS485 Interface	√	√	√	√
Door Magnetic Detector	√	√	√	√
Wiegand Interface	√	√	√	√
Wall-mounted/Flushed mounted	√	√	√	√
Protection Level	IP66, IK07	IP66, IK07	IP66, IK07	IP66, IK07
Wide Temperature Range	- 40°C ~ 70°C	- 40°C ~ 70°C	- 40°C ~ 70°C	- 40°C ~ 70°C

i6/i3/i2 Series Door Phone Specification



i33VF Video Door Phone



i33V Video Door Phone



i32V Video Door Phone

Picture	i33VF Video Door Phone	i33V Video Door Phone	i32V Video Door Phone
SIP Line	2	2	2
Camera	√	√	√
Screen	128X48 Dot-matrix with backlight	128X48 Dot-matrix with backlight	×
Standalone Intercom No Central Unit/Server Needed	√	√	√
RTSP	√	√	√
ONVIF	√	√	√
HD Video (720P)	√	√	√
HD Audio (G.722)	√	√	√
Linkage with Third Party IP Camera	×	×	×
Built-in Electric Relay	2	2	2
Access Control	√	√	√
Numerical Keypad	√	√	×
DSS Key	×	×	1
Built-in RFID/IC Card Reader	√	√	√
Power Supply PoE	√	√	√
Power Supply 12V DC	√	√	√
Tamper-Proof	√	√	√
Protection Level	IP65&IK10	IP65&IK10	IP65&IK10
Wide Temperature Range	-40°C~70°C	-40°C~70°C	-40°C~70°C
Power Amplifier	3W	3W	3W
RFID/IC Card Number	5000	5000	5000
Short Circuit Output	2	2	2
Short Circuit Input	2	2	2
Auto-Provisioning via DHCP/TRO69/SIP PNP	√	√	√
Integration with Third Party Systems	√	√	√
Icon Indication	√	√	×
Wiegand Port	√	√	√



i31S Video Door Phone



i23S Audio Door Phone



i30 Video Door Phone



i20S Audio Door Phone

2	2	2	2
√	×	√	×
×	×	×	×
√	√	√	√
√	×	√	×
√	×	√	×
√	×	√	×
√	√	√	√
×	√	×	√
1	1	1	1
√	√	√	√
√	√	√	√
1	1	1	1
√	√	√	√
√	√	√	√
√	√	√	√
√	√	×	×
IP65&IK10	IP65&IK10	IP65	IP65
-40°C~70°C	-40°C~70°C	-20°C~60°C	-10°C~60°C
3W	3W	3W	3W
5000	5000	5000	5000
1	1	1	1
1	1	1	1
√	√	√	√
√	√	√	√
√	√	√	√
×	×	×	×

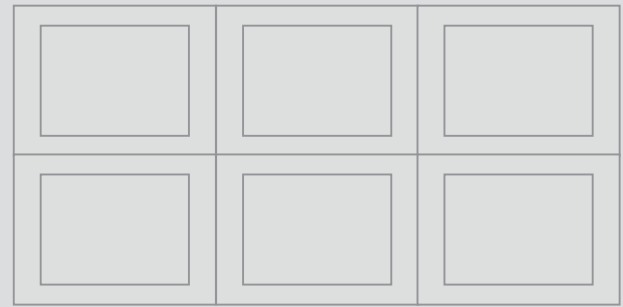
Console IP Phone

Equipped with a gooseneck microphone, Fanvil visual paging console phone has powerful functions. Compatible with the standard SIP protocol, it enables intelligent programmable keys and supports hands-free call. It is used as a monitoring center or host for office manager to meet the needs in medium and small scenario dispatching management. It improves the management efficiency and emergency response capabilities.



A32i Android Console IP Phone

Level up Communication Efficiency



Highlights

Business Aesthetic Design

Business aesthetic design, crystal-clear color screen, user-friendly UI interface

Android OS

It ensures stable operation of product and software, with good compatibility and functional extensibility, and support installation and use of third-party Android applications

HD Audio/Video Call

It supports wideband audio codec G.722 and Opus and video codec of H.264 1080P, and can provide the users with premium quality HD audio/video call experience

Fanvil Broadcast System

With Fanvil broadcast system, it is stable and extensible and can achieve rich and flexible broadcast application and system management

HD Video Linkage

With IP camera, it can make audio/video call with the video phone and view the HD video image of the camera

Unattended Operation

Unattended operation mode is suitable for night or temporary absence scenarios at management center, so the management may become convenient and real time

Console IP Phone



A32i Android Console IP Phone

- 10.1 inch touch screen, easy for operation
- Support Android 9.0 OS for the installation of third-party Android application
- Optional Fanvil Press-To-Mute handset
- Gooseneck microphone presents sound with good reproduction
- Up to 112 DSS keys DIY configuration, with each DSS key set as Line/BLF/speech dial, etc.
- Built-in Fanvil broadcast system can achieve rich and flexible broadcast application and management
- Provide premium HD audio with wideband audio codec G.722 & Opus
- 20 SIP lines
- Built-in Bluetooth 4.2. It supports Bluetooth headset, EHS headset
- Built-in 2.4G/5G WiFi
- Be able to receive video calls with video codec H.264
- Dual Gigabit ports, Integrated PoE
- Support video codec of H.264, with camera and Fanvil video door phone for video call
- View video on door phone screen to open door remotely



X210i Console IP Phone

- A 4.3 inch color screen, 2 x 3.5 inch side color screens
- Gooseneck microphone presents sound with good reproduction
- Up to 106 DSS keys provided for easy and quick feature customization such as BLF, speed dial, group broadcasting etc.
- Provide premium HD audio with wideband audio codec G.722 & Opus
- 20 SIP lines
- Built-in Bluetooth 4.2. It supports Bluetooth headset and EHS headset
- Easy to connect WiFi via WiFi Dongle
- Be able to receive video calls with video codec H.264
- Dual Gigabit ports, Integrated PoE

Console IP Phone Specification



A32i
Android Console IP Phone



X210i
Console IP Phone

Picture	A32i Android Console IP Phone	X210i Console IP Phone
Main Screen	800X1280 10.1-inch Color Touch Screen	480X272 4.3-inch Color Screen
Side Screen	×	Two 3.5-inch 480X320 Color Screens
Video Codec	H.264/H.265(Optional) 720P/1080P	H.264/1080P
Video Call	√ Only receive video from the calling side	√ Only receive video from the calling side
Camera	1080P Fanvil CM60 HD USB Camera (Optional)	×
Gooseneck Microphone	√	√
DSS Keys	112	106
SIP Lines	20	20
Lines Keys	Reuse virtual DSS Key	10
Local Phone Book	2000	2000
Call Log	1000	1000
Audio Conference	3-way conference	6-way conference
IPv6	×	√
HD Audio	√	√
Wideband Codecs	G.722,Opus	G.722,Opus
Bluetooth	Built-in Bluetooth 4.2	Built-in Bluetooth 4.2
WiFi	Built-in 2.4G/5G WiFi	Via USB Dongle
PoE	√	√
Network	10/100/1000 Mbps	10/100/1000 Mbps
EHS Headset	√	√
Foot Stand	40° and 50°	40°and 50°

Audio/Video Gateway

Small and stylish, with HD-audio and function-rich interfaces, it is used for real-time and fix-time MP3 broadcasting, one-touch intercom and video linkage when connecting to the external devices.



PA3 SIP Audio/Video Gateway

Rich Interfaces, Wide Application Scenarios



Highlights

Perfect for Industrial Devices

Small and stylish, it is easily and flexibly installed in other industrial devices

HD Audio for Public Broadcasting

With wideband audio codec G.722/Opus/MP3, it brings the users a crystal-clear telecom auditory experience

Rich Interfaces

A variety of interfaces enable you to quickly customize your broadcasting, amplification and intercom solution, to suit a wide range of applications

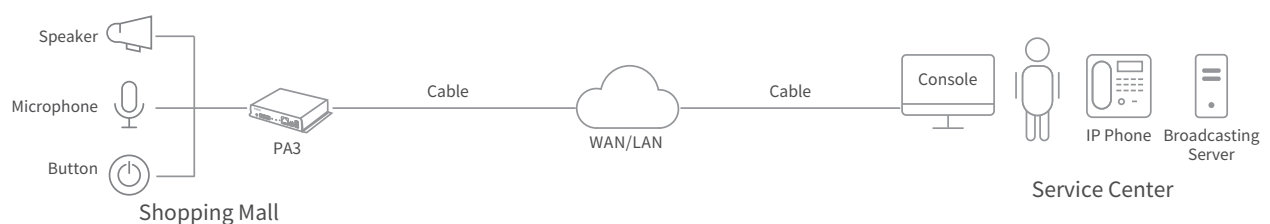
Video Linkage with IP Camera

With IP camera, it achieves audio/video call with the video phone and view the HD video image of the camera

Standard Network Communication Protocol

Based on SIP standard communication protocol. It can be deployed in both LAN and WAN

Diagram



Audio/Vido Gateway

PA3 SIP Paging Gateway



- Small and stylish, it can be installed in other devices
- SOS call key interface, one-click call
- Line in audio input interface, 3.5mm standard audio interface, plug-and-play
- Line out audio output interface, it is extended to external active speaker interface
- 10W~30W single-channel power output, can adapt output power by input voltage
- Support USB 2.0 interface and TF card slot, for data storage or offline play of audio
- Megabit Ethernet and PoE

PA2S SIP Paging Gateway



- Small and stylish, it can be installed in other devices
- SOS call key interface, one-click call
- Camera NVR recording, standard RJ45 interface
- Recording output, 3.5mm standard audio interface, plug-and-play
- Line out audio output interface, it is extended to external active speaker interface
- 10W~30W single-channel power output, can adapt output power by input voltage
- Support 1 short circuit input and 1 short circuit output interface
- Megabit Ethernet and PoE

SIP PA2-KIT



- High reliability components, plug and play
- 720P camera module to achieve HD video call; The lens mounting height and Angle can be adjusted to meet the requirements of various scenarios
- High sensitivity pick up, waterproof, dustproof designed microphone module, suitable for harsh environment application
- 5W/8Ω speaker module, satisfied the noisy environment to the demand of the high loudness of the intercom equipment
- Waterproof and dustproof designed stainless steel button with LED indicator for better operation
- Available for PA2/PA2S SIP paging gateway

Audio/Video Gateway Specification



Picture	PA3 Paging Gateway	PA2S Paging Gateway
SIP Line	2	2
Camera	×	√ Via external accessories
Standalone Intercom No Central Unit/Server Needed	√	√
RTSP	√	√
ONVIF	√	√
HD Video (720P)	×	Up to 1080P for IP Camera
HD Audio	G.722 ,Opus	G.722 ,Opus
Linkage with Third Party IP Camera	√	√
Built-in Electric Relay	×	1
Access Control	2	1
Audio Line-in/Line-out	Audio Line-in/Line-out	Audio Line-in/Line-out
Power Supply PoE	PoE Class4	√
Power Supply 12V DC	12V-24V 2A	12V-24V 2A
Wide Temperature Range	-20°C~50°C	-30°C~60°C
Power Amplifier	Max 4Ω/30W or 8Ω/15W	Max 30W
Short Circuit Output	×	1
Short Circuit Input	×	1
Auto-Provisioning via DHCP/TR069 SIP PNP	√	√
Integration with Third Party Systems	√	√
TF Cardreader	√	×
USB 2.0	√	×
MP3 Broadcasting	√	√

Accessories

Headset—HT201/HT202

- Superior Noise Canceling Microphone blocks out unwanted noise
- Crystal-clear HD voice quality, ensuring a clear and natural sound experience
- PeakStop technology removes sudden loud noise before they reach your ears, protecting your hearing from harmful loud noise
- Both Monaural/Binaural models are available to meet your preference
- Soft foam ear cushions covered with high-end leatherette, keeps ear cool, all day comfort
- Sturdy & Durable connection, durable unibody design, and reinforced cord defend your headsets against every use
- Compatible with all Fanvil IP phones



HT201



HT202

USB Bluetooth Adapter BT20



EHS Switch Adapter EHS20



USB WiFi Adapter WF20



Portable USB HD Camera CM60



FDPS and FDMS

FDPS(Fanvil Distributed Provisioning Service)



- Auto Provision
- High Security Level
- Local and RPC Remote Management

Application

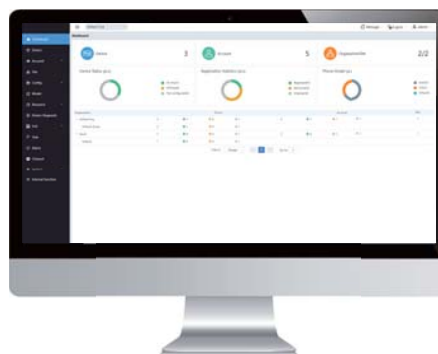
- Fanvil Distributed Provisioning Service (FDPS) is a free provision tool for Fanvil Agents, distributors, and resellers to save cost and time on auto-provision features

Features

- Support web GUI management, also remote management via FDPS RPC
- FDPS works as plug and play when Fanvil devices access to internet after first power on or after reset
- Easy to achieve auto provisioning for Fanvil devices. Just a simple file download server is needed, such as http/https/ftp/tftp server, no need to build a professional provisioning environment
- Devices' firmware could be managed and provisioned more easily. No need to arrange different kind of firmware files for different customers during production, nor maintenance (upgrading firmware) manually and locally
- High security level. FDPS supports HTTP/HTTPS with encrypted connection; and authentication check for connecting devices
- The customized provisioning settings could be re-downloaded via FDPS even the device configs are reset by mistake
- Free of charge (The customer's config file download server is not included)

FDMS (Fanvil Device Management Solution)

- Auto-Provisioning
- Remote Management and Maintenance
- Stable System with High Security



Application

- Fanvil Device Management Solution (FDMS) provides users with a quick and easy-to-use tool for remote deployment and management of devices, improving the installation efficiency and saving maintenance time and cost.

Features

- Cloud Deployment / Local Server Deployment: Cloud deployment and local server deployment are available. Users can use it directly on the web and don't need to download the software, reducing the complexity of procedures
- Remote Deployment and Management: Integrated functions of equipment management, account registration, configuration upgrade, firmware upgrade, device diagnosis, order management, statistical analysis
- Auto-Provisioning: Achieve the online configuration and management of devices in batches via different sites and models
- Online Maintenance: Multi-party information alarm for abnormal situations and timely online maintenance to improve management efficiency
- High Security: Guarantee the security of user data with TLS certificate verification and mutual certificate verification



 **Star System**[®]
Distribuzione sistemi di sicurezza

TELEFONIA

Via Comunità Economica Europea, 41
95045 Misterbianco (CT)
+39 095 483 720
info@starsystemsrl.it
www.starsystemsrl.it